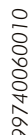


**601001**  
**603001**

**84-108-120-130**

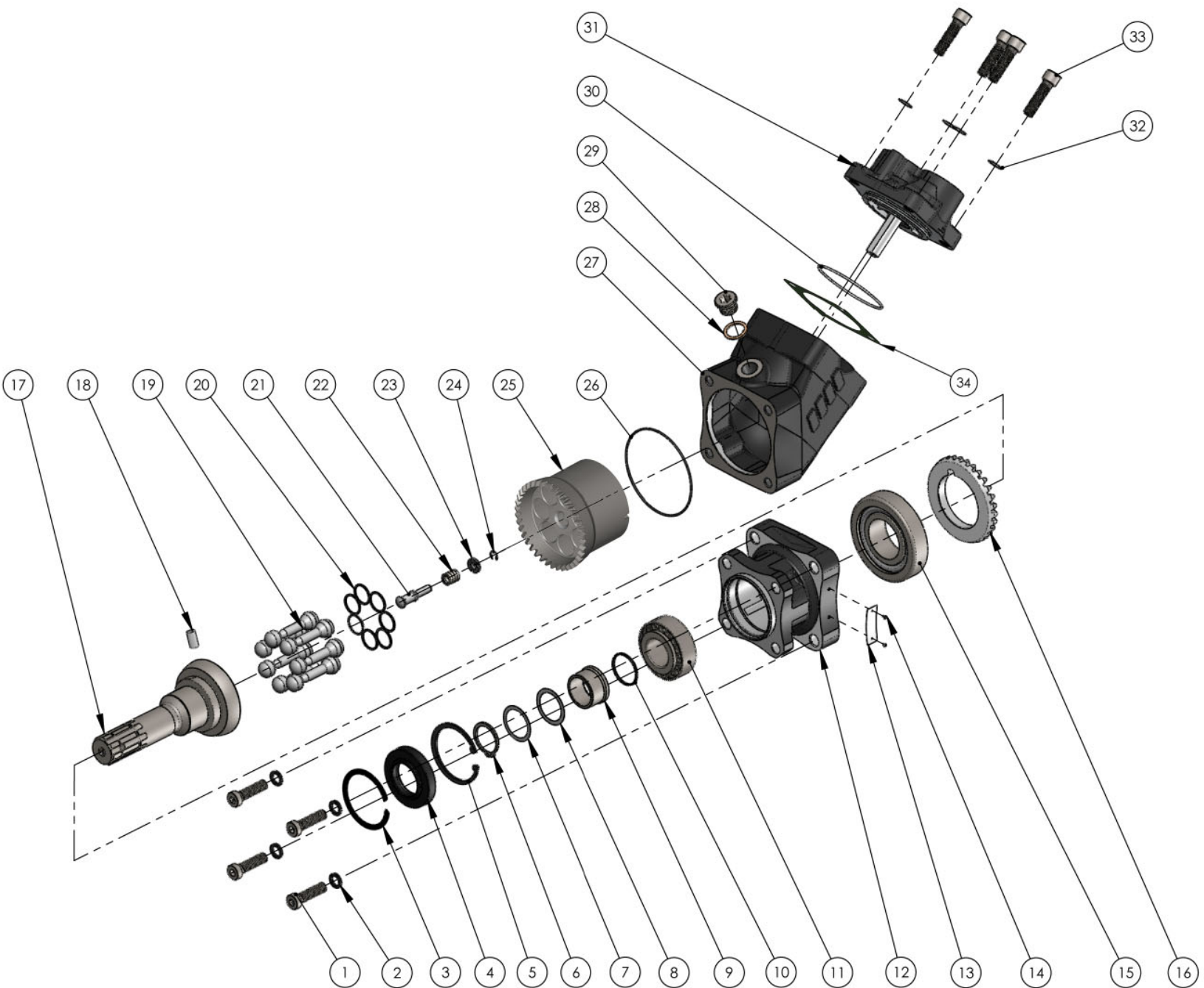


<b>Fluido idraulico</b> <i>Fluid</i>	<b>Minerale o sintetico compatibile con guarnizioni:</b> <i>Mineral or synthetic compatible with the following seals:</i> <b>FKM, FPM, HNBR</b>				
<b>Viscosità cinematica consigliata</b> <i>Kinematic viscosity suggested</i>	<b>T media ambiente (°C)</b> <i>Average ambient temp. (°C)</i>	< -40	-40 ÷ 10	10 ÷ 35	> 35
	<b>VG (cSt = mm²/s)</b>	16	22	32	46
<b>Viscosità cinematica ottimale di esercizio</b> <i>Optimale kinematic viscosity</i>			<b>VG = 10 cSt ÷ 100 cSt</b>		
<b>Viscosità cinematica max consentita all'avviamento</b> <i>Max kinematic viscosity suggested at the start-up</i>			<b>VG = 750 cSt</b>		
<b>Indice di viscosità consigliato</b> <i>Viscosity index suggested</i>		<b>VI &gt; 100</b>	<b>Temperatura di esercizio</b> <i>Working temperature</i>		
			<b>-40°C ÷ 140°C</b>		
<b>Grado di filtrazione</b> <i>Oil filtering</i>			<b>&gt; 200 bar: 10 µm</b> <b>&lt; 200 bar: 25 µm</b>		
<b>Pres. di aspirazione</b> <i>Inlet pressure</i>			<b>0,85 ÷ 2 bar</b> <b>assoluti/absolut</b>		
<b>Senso di rotazione</b> <i>Pump rotation</i>			<b>Unidirezionale (Dx o Sx)</b> <b>Unidirectional (Right or Left)</b>		
<b>Verificare che la pompa sia posizionata almeno 100 mm sotto il livello minimo del serbatoio olio. Prima di avviare la pompa effettuare spurgo aria.</b> <i>Verify that pump is, at least, 100 mm under the minimum level of the tank. Before starting the pump bleed the air.</i>					



- **Larghezza minima corpo a quota indicata** ■  
*Minimum bodywidth at indicated measurement*

Tipo pompa <i>Pump type</i>	Rotazione / <i>Rotation</i>		IN	OUT
	Destra / <i>Right</i>	Sinistra / <i>Left</i>	ISO 228	ISO 228
HDS-84	60100110843	60100110849	G 1 1/4"	G 1"
HDS-108	60100111083	60100111089	G 1 1/2"	
HDS-130	60100111303	60100111309		
MDS-120	60300111203	60300111209		
MDS-130	60300111303	60300111309		
			ISO 725	ISO 725
HDS-84	60100150843	60100150849	1 7/8-12 UN-2B SAE 24	1 5/16-12 UN-2B SAE 16
HDS-108	60100151083	60100151089		
HDS-130	60100151303	60100151309		
MDS-120	60300151203	60300151209		
MDS-130	60300151303	60300151309		





O.M.F.B. S.p.A. Hydraulic Components  
We reserve the right to make any changes without notice.  
Edition 2016.06 No reproduction, however partial, is permitted.  
Via Cave, 7/9 25050 Provaglio d'Iseo (Brescia) Italy Tel.: +39 030 9830611  
Fax: +39 030 9839207 208 Internet: www.omfb.it e-mail: contatti@omfb.it

pag. 37

COMPANY WITH  
QUALITY SYSTEM  
CERTIFIED BY DNV GL  
= IATF 16949 =

601001  
603001SCHEMA RICAMBI POMPE A PISTONI HD5 84-108-130 E MDS 120-130  
HD5 PISTON PUMP 84-108-130 AND MDS 120-130 SERIES SPARE PARTS"HD5"  
"MDS"

N°	HD5 84		HD5 108		HD5 130		MDS 120		MDS 130		Codice/Code	Descrizione / Description		Q.tà/Q.ty
	GAS	SAE	GAS	SAE	GAS	SAE	GAS	SAE	GAS	SAE				
1	•	•	•	•	•	•	•	•	•	•	50200500573	Vite TCE M12x45	Socket head capscrew	4
2	•	•	•	•	•	•	•	•	•	•	50102000129	Rosetta elastica	Washer	4
3	•	•	•	•	•	•	•	•	•	•	50100002729	Anello elastico	Circlip	1
4	•	•	•	•	•	•	•	•	•	•	50600024272	Paraolio	Oil seal	1
5	•	•	•	•	•	•	•	•	•	•	50100100677	Anello elastico	Circlip	1
6	•	•	•	•	•	•	•	•	•	•	50100001355	Anello seeger rinforzato	Retaining ring	1
7	•	•	•	•	•	•	•	•	•	•	52900701127	Rondella	Spacers	2
8	•	•	•	•	•	•	•	•	•	•	52900700226	Rondella	Spacers	2
9	•	•	•	•	•	•	•	•	•	•	51100200200	Bussola	Bushing	1
10	•	•	•	•	•	•	•	•	•	•	50600013137	Guarnizione OR	O-ring	1
11	•	•	•	•	•	•	•	•	•	•	51000200364	Cuscinetto a rulli conici	Tapered roller bearing	1
12	•	•	•	•	•	•	•	•	•	•	51700201172	Corpo anteriore	Front housing	1
13	•	•	•	•	•	•	•	•	•	•	513	Targhetta completa	Plate	1
14	•	•	•	•	•	•	•	•	•	•	51300000011	Chiodino fissaggio targhetta	Plate nail	2
15	•	•	•	•	•	•	•	•	•	•	51000200355	Cuscinetto a rulli conici	Tapered roller bearing	1
16	•	•	•	•	•	•	•	•	•	•	51000200357	Cuscinetto a rulli conici	Tapered roller bearing	1
17	•	•	•	•	•	•	•	•	•	•	52501100273	Corona dentata	Crown	1
18	•	•	•	•	•	•	•	•	•	•	52200500562	Albero	Shaft	1
19	•	•	•	•	•	•	•	•	•	•	52200500955	Albero	Shaft	1
20	•	•	•	•	•	•	•	•	•	•	50100306142	Spina UNI 6364	Pin UNI 6364	1
21	•	•	•	•	•	•	•	•	•	•	53200500034	Pistone sferico	Piston	7
22	•	•	•	•	•	•	•	•	•	•	53200500105	Pistone sferico	Piston	7
23	•	•	•	•	•	•	•	•	•	•	50102300037	Fasce elastiche	Spring rings	21
24	•	•	•	•	•	•	•	•	•	•	50102300055	Fasce elastiche	Spring rings	21
25	•	•	•	•	•	•	•	•	•	•	50102300117	Fasce elastiche	Spring rings	21
26	•	•	•	•	•	•	•	•	•	•	54200100162	Perno sferico con guida albero	Shaft guide pin	1
27	•	•	•	•	•	•	•	•	•	•	51200500812	Molla di carico corpo cilindri	Spring	1
28	•	•	•	•	•	•	•	•	•	•	54200100171	Anello guida molla	Spring guide ring	1
29	•	•	•	•	•	•	•	•	•	•	50101500028	Anello seeger	Retaining ring	1
30	•	•	•	•	•	•	•	•	•	•	50002916084	Gruppo corpo cilindri sede pistoni	Piston barrel assembly	1
31	•	•	•	•	•	•	•	•	•	•	50002916108	Gruppo corpo cilindri sede pistoni	Piston barrel assembly	1
32	•	•	•	•	•	•	•	•	•	•	50002916130	Gruppo corpo cilindri sede pistoni	Piston barrel assembly	1
33	•	•	•	•	•	•	•	•	•	•	50600012412	Guarnizione OR	O-Ring	1
34	•	•	•	•	•	•	•	•	•	•	51700201412	Corpo intermedio	Int. housing	1
35	•	•	•	•	•	•	•	•	•	•	11500600135	Tappo cieco	Blank plug	1
36	•	•	•	•	•	•	•	•	•	•	11600910129	Rondella rame	Copper washer	1
37	•	•	•	•	•	•	•	•	•	•	50600018520	Guarnizione OR	O-ring	1
38	•	•	•	•	•	•	•	•	•	•	50002990848	Gruppo corpo posteriore	Rear cover assembly	1
39	•	•	•	•	•	•	•	•	•	•	50002990857	Gruppo corpo posteriore	Rear cover assembly	1
40	•	•	•	•	•	•	•	•	•	•	50002991089	Gruppo corpo posteriore	Rear cover assembly	1
41	•	•	•	•	•	•	•	•	•	•	50002991098	Gruppo corpo posteriore	Rear cover assembly	1
42	•	•	•	•	•	•	•	•	•	•	50002991301	Gruppo corpo posteriore	Rear cover assembly	1
43	•	•	•	•	•	•	•	•	•	•	50002991310	Gruppo corpo posteriore	Rear cover assembly	1
44	•	•	•	•	•	•	•	•	•	•	50102000129	Rosetta elastica	Washer	4
45	•	•	•	•	•	•	•	•	•	•	50200500573	Vite TCE M12x45	Socket head capscrew	4
46	A	A	A	A	A	A	A	A	A	A	50700000247	Guarnizione piatta	Gasket	1
47	A	A	A	A	A	A	A	A	A	A	50700000541	Guarnizione piatta	Gasket	1

A = alternative

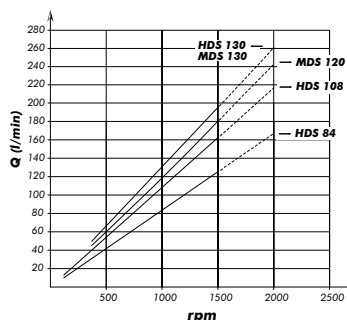
## CARATTERISTICHE TECNICHE DI FUNZIONAMENTO / TECHNICAL FEATURES

Tipo pompa Pump type	Cilindrata Displacement cm <sup>3</sup> /rev	Pressione Pressure P1 P3 bar bar		Velocità / Speed V0 V1 V2 rpm rpm rpm			Velocità min. Min. speed rpm	Peso Weight kg
HDS-84	84.33	350	400	2300	1500	2000	300	19.2
HDS-108	107				1500			18.6
HDS-130	131.62				1750			18.3
MDS-120	122.1	260	280	2300	1500	2000	300	18.4
MDS-130	131.62	250	270		1500			18.7

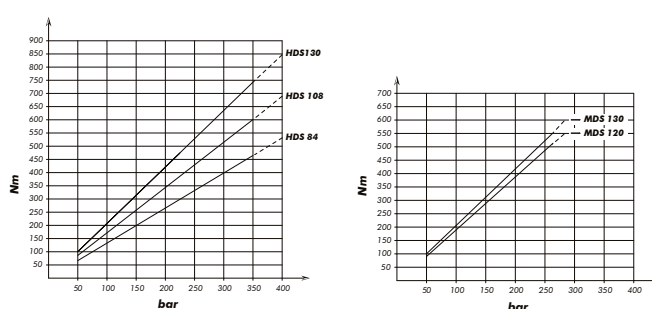
P1=Pressione massima continua Max. continuous pressure (100%)  
P3=Pressione massima di punta Max. peak pressure (6 sec.max)

V0=Massima continua vuoto Max. continuous speed without load  
V1=Massima continua Max. continuous speed  
V2=Massima intermittente Max. intermittent speed

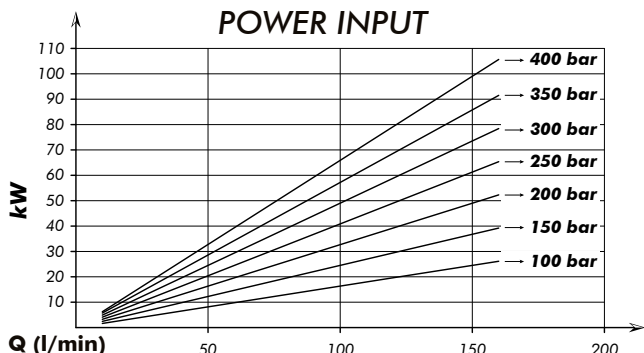
### PORTATA / FLOW



### COPPIA ASSORBITA / DRIVE TORQUE



### POTENZA ASSORBITA POWER INPUT



### SCELTA DEL TUBO DI ASPIRAZIONE

#### HOW TO CHOOSE THE SUCTION PIPE SIZE

Q Portata Flow l/min	interno min. tubo Min pipe diam. mm inch		Velocità flusso Flow speed (m/s)
20	25	1"	0,68
30	32	1" 1/4	0,62
40	32	1" 1/4	0,83
50	38	1" 1/2	0,74
60	38	1" 1/2	0,88
70	40	1" 9/16	0,93
80	45	1" 3/4	0,84
90	45	1" 3/4	0,94
100	50	2"	0,85
110	50	2"	0,93
120	60	2" 3/8	0,71
130	60	2" 3/8	0,77
140	60	2" 3/8	0,83
150	60	2" 3/8	0,88
160	63	2" 1/2	0,86
170	63	2" 1/2	0,91
180	63	2" 1/2	0,96

Per garantire corrette condizioni di aspirazione la velocità del flusso non deve superare 1 m/sec.  
To ensure the proper suction pipe size the flow speed should not exceed 1m/sec.

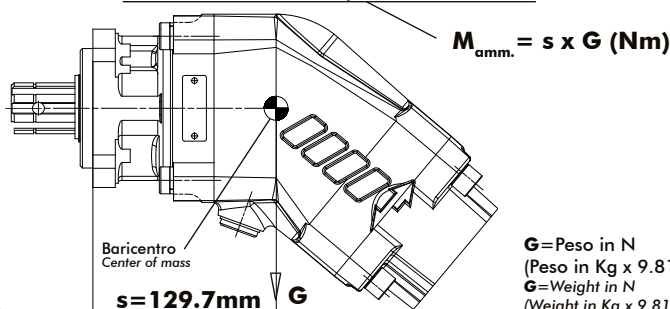
POMPA SINISTRA  
LEFT PUMP



POMPA DESTRA  
RIGHT PUMP

**Kit guarnizioni / Seal Kit**  
10890384009

### MOMENTO PESO / MASS MOMENT



G=Peso in N  
(Peso in Kg x 9.81)  
G=Weight in N  
(Weight in Kg x 9.81)