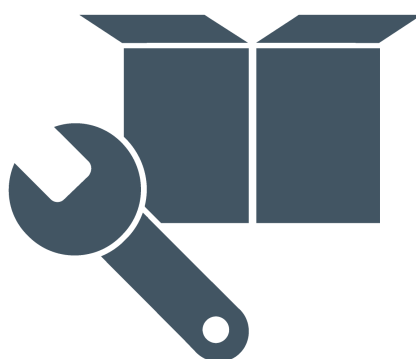


# CES Component



No. 8993 4197 70  
Rev. 001 |



**© Copyright 2020, Epiroc Rock Drills AB, Sweden**

Any unauthorized use or copying of the contents or any part thereof is prohibited.  
This applies in particular to trademarks, model denominations, part numbers and drawings.

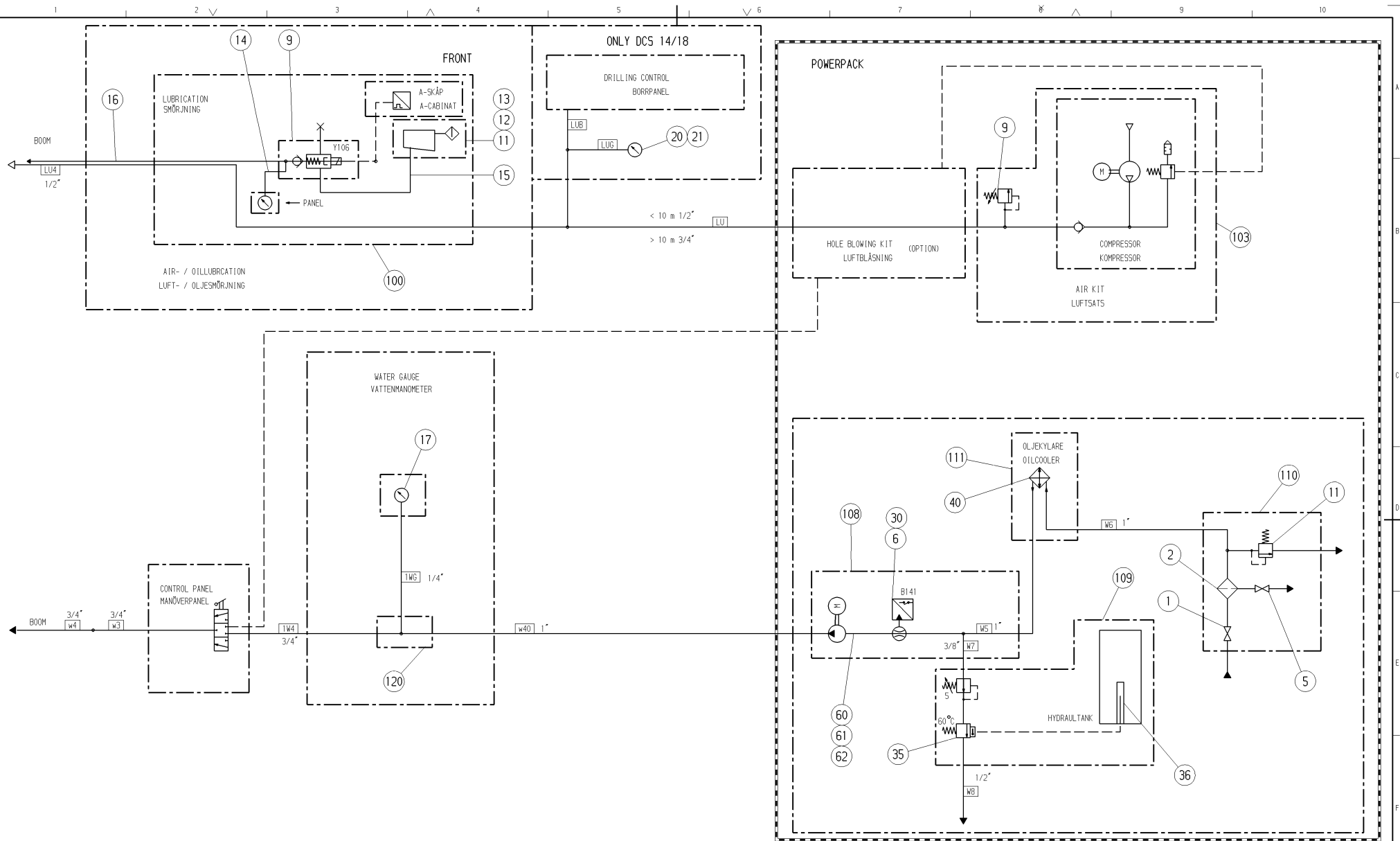
# Table of Content

<b>Pneumatic Diagram.....</b>	<b>5</b>
AIR/WATERSYSTEM / .....	6
<b>Electrical Diagram.....</b>	<b>7</b>
CIRCUIT DIAGRAM / DCS PANEL.....	8
CIRCUIT DIAGRAM / D75/95*2 IEC 400-690Y/D.....	9
CIRCUIT DIAGRAM / 380-690V 50/60.....	20
ELECTRIC SET / .....	23
<b>Hydraulic Diagram.....</b>	<b>25</b>
HYDR. SCHEDULE / CONTROL PANEL BOOMPOS.....	26
DRILL PANEL / DCS18-1 DRILL PANEL.....	27
CONTROL PANEL / DRILLING PANEL STD.....	29
HYDR. SYSTEM / .....	31
FILLER SET / HAND PUMP.....	32
HYDR. SCHEDULE / BUT 35 / TURNING DEVICE.....	33
HYDR. SCHEDULE / WATER REEL.....	34
HYDR. SCHEDULE / WATER REEL SWING.....	35
HYDR. SCHEDULE / CABLE REEL.....	36
<b>Lubrication Diagram.....</b>	<b>37</b>
LUBRICATION SET / BOOM LUBRICATION.....	38
<b>Mechanical - Overview.....</b>	<b>39</b>
ASSEMBLY DWG / BMH 6X16.....	40
STROP INSTR. / STROP INSTR.....	41
CIRCUIT DIAGRAM .....	42



**Pneumatic Diagram**  
**LIST OF CONTENTS**

Part no	Description	Remarks	Page
9106155254	AIR/WATERSYSTEM		6

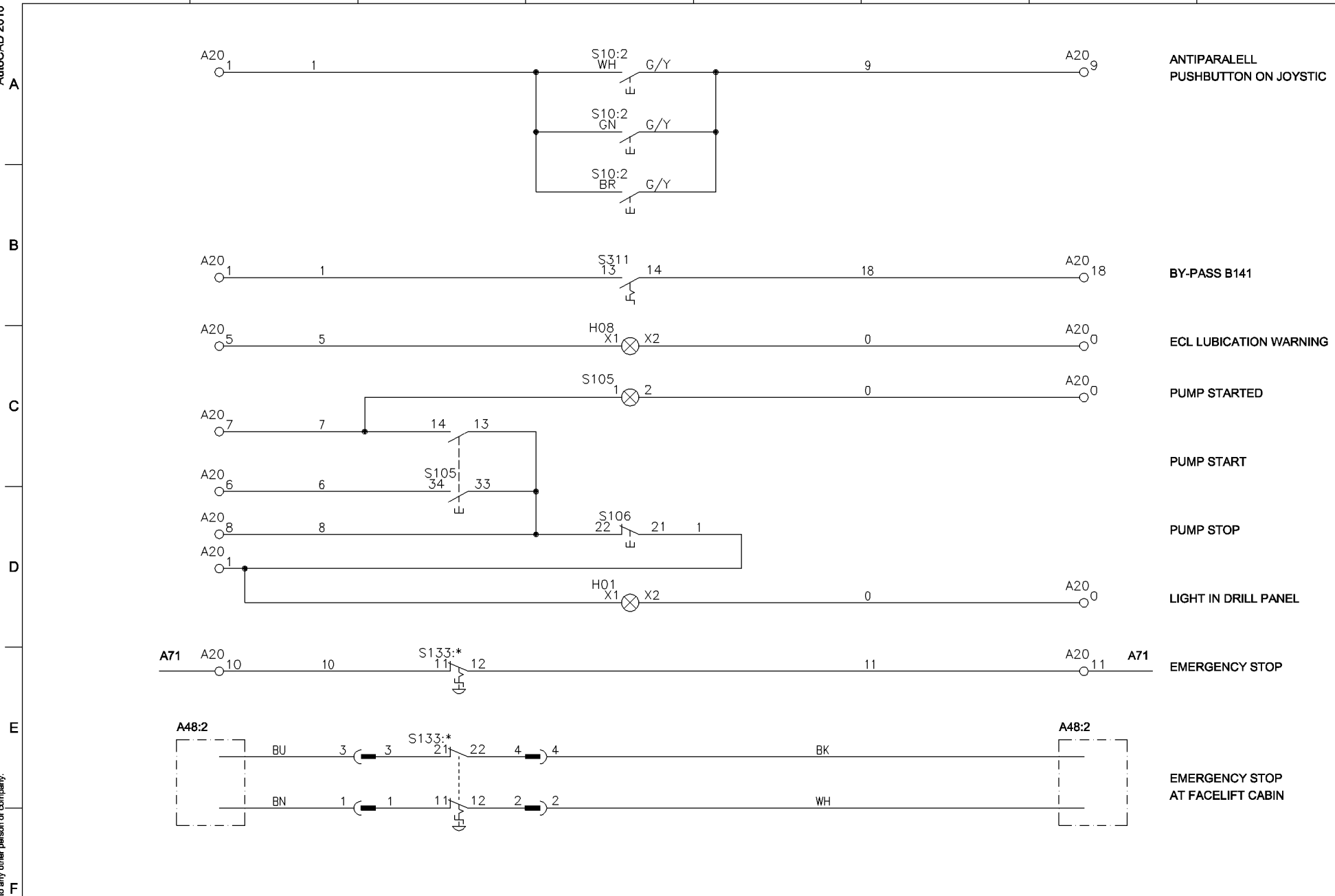


DÄR EJ ANNAT ANGES ÄR HYDRAULSLANG TYP 2AT (SAE 100 R2AT)  
HYDRAULIC HOSES TYPE 2AT (SAE 100 R2AT) UNLESS OTHERWISE STATED.


Pos.	Designation	Number	Item	Material
Accessories, if not indicated, according to:				
ATLAS COPCO STANDARD / Class		1350 K /	-	-
Name: LUFT OCH VATTENSKEMA DCS 12/14/18-1				
Material: AIR AND WATER SCHEDULE				1182 K /
				CAD
Scale: 1:1				
Drawn: LUKK01/ABH		Check:	Designation:	Org. user:
Appr.:		Per. C:	02-10-31	TMG
Operation drawings and documents		9106 1552 54		

**Electrical Diagram**  
**LIST OF CONTENTS**

<b>Part no</b>	<b>Description</b>	<b>Remarks</b>	<b>Page</b>
9110350085	CIRCUIT DIAGRAM	DCS PANEL	8
9106218435	CIRCUIT DIAGRAM	D75/95*2 IEC 400-690Y/D	9 - 19
9106128762	CIRCUIT DIAGRAM	380-690V 50/60	20 - 22
9106106544	ELECTRIC SET		23



This document is our property and shall not without our permission be altered, copied, used for manufacturing or communicated to any other person or company.

						Design Area	KRETSSCHEMA		Drawn	AVOLJ	Approver	LJ	Type	DCS	A3	
1		S133 AT FACELIFT CABIN ADDED	12-10-19	HH	TMG139882	Drawing type	CIRCUIT DIAGRAM		Design chd.		Drawing owner	TMG	Designation	Sheet 01(01)		
Rev	Pos.	Modified from	Date	Sign.	DN no.	Drawing name	STRUCTURE: 9110 3400 99		Date	07-10-22	Compare		9110 3500 85			



This document is our property and shall not without our permission be altered, copied, used for manufacturing or communicated to any other person or company.

AutoCAD 2010

A

B


C

D

E

F

1	2	3	4	5	6	7	8		
DESIGN.	DESCRIPTION	LOC	INST	SHEET	DESIGN.	DESCRIPTION	LOC	INST	SHEET
A41	EMERGENCY STOP BOX WITH PILOT TEST BUTTON(OPTION)	A41		03	K01	MAIN CONTACTOR ELECTRICAL MOTOR	A10		06
A34	EXTERNAL OUTLET MAIN VOLTAGE OR TRANSFORMER (OPTION)	A34		04	K01T	STAR/DELTA RELAY	A10		06
A50	MAIN APARATUS BOX FOR CARRIER ELECTRICS 24VDC	A50		09	K02	D CONTACTOR ELECTRICAL MOTOR	A10		06
A53	APPARATUSBOX ON BOM FRAME	A53		10,11	K02T	TIME RELAY FOR PUMP UNLOADING	A10		06
A74	WORKING LIGHT PANEL 230V	A74		04	K03	Y CONTACTOR ELECTRICAL MOTOR	A10		06
B141	WATERFLOW GARD			10	K11	START RELAY ELECTRIC MOTOR	A10		06
B146	HYDRAULIC OIL TEMP GARD			07	K20	RELAY FOR LOW HYDRAULIC OIL LEVEL SIGNAL	A10		09
B147	COMPRESSOR OIL TEMP GARD			07	K21	RELAY FOR HIGH HYDRAULIC OIL TEMP SIGNAL	A10		07
B188	PRESSURE SWITCH COMPRESSOR UNLOADING			07	K50	PHASE SEQUENCE RELAY	A10		03
B348	PRESSURE SWITCH FIRE SUPRESSION SYSTEM			09	K51	GROUND FAULT RELAY 300mA AND 500ms	A10		07
ECL	PULSE RELAY FOR ROCK DRILL LUBRICATION	A10		07	K53	EMERGENCY STOP RELAY	A10		08
F01	ELECTRONIC OVERLOAD PROTECTION FOR ELECTRIC MOTOR	A10		05	K141	RELAY FOR WATER PUMP START CIRCUIT	A53		10
F02	MOTOR PROTECTION CIRCUIT BREAKER FOR EXTERNAL OUTLET OR SUPPLY OR EXTERNAL TRANSF. 9-14A	A10		04	M01	ELECTRIC MOTOR PUMP 1			04
F03	AUTOMATIC CIRCUIT BREAKER FOR TRANSF. T04 17-23A	A10		04	M02	ELECTRIC MOTOR PUMP 2			05
F10	MOTOR PROTECTION CIRCUIT BREAKER FOR TRANSF. T02 0.25-0.4A	A10		03	M10	FAN ELECTRICAL CABINET	A10		05
F14	AUTOMATIC CIRCUIT BREAKER FOR CONTACTOR COILS 6A	A10		04	P01	VOLT/AMPERE/HOUR-METER	A10		08
F15	AUTOMATIC CIRCUIT BREAKER FOR EXTRA LIGHT + HEATER 10A	A10		04	Q01	MAIN CIRCUIT BREAKER	A10		03
F16	AUTOMATIC CIRCUIT BREAKER FOR WALL OUTLET IN CABIN 10A	A10		04	Q01:1	UNDERVOLTAGE COIL INSIDE MAIN CIRCUIT BREAKER	A10		03
F17	AUTOMATIC CIRCUIT BREAKER FOR WORKING LIGHTS LEFT 10A	A10		04	R01	THERMISTOR INSIDE ELECTRICAL MOTOR (155dgrC)	M01		05
F18	AUTOMATIC CIRCUIT BREAKER FOR WORKING LIGHTS RIGHT 10A	A10		04	S01	EMERGENCY STOP BUTTON	A41		03
F19	AUTOMATIC CIRCUIT BREAKER FOR POWER SUPPLY A40 10A	A10		04	S02	PILOTE TEST BUTTON (OPTION)	A41		03
F25	GROUND FAULT CIRCUIT BREAKER (30mA) 32A FOR F15-F19	A10		04	S10	ANTIPARALLEL PUSH BUTTON ON JOYSTICK	A20		11
H01	LIGHT IN DRILLPANEL	A20		11	S11	MOTOR CIRCUIT BREAKER, MOTOR 1 (CONTROL VOLATGE)	A10		06
H02	SIGNAL LAMP FOR ELECTRIC MOTOR OVERLOAD AND MAIN CIRCUIT BREAKER TRIPPED	A10		07	S12	MOTOR CIRCUIT BREAKER, MOTOR 2 (CONTROL VOLATGE)	A10		06
H03	SIGNAL LAMP FOR WRONG PHASE SEQUENCE	A10		07	S23	LIMIT SWITCH LEFT DOOR	A10		03
H04	SIGNAL LAMP FOR LOW HYDRAULIC OIL LEVEL	A10		07	S24	LIMIT SWITCH RIGHT DOOR	A10		03
H05	SIGNAL LAMP FOR HIGH HYDRAULIC OIL TEMP	A10		07	S105	PUMP START BUTTON IN DRILLPANEL	A20		11
H06	SIGNAL LAMP FOR MAIN VOLTAGE CONNECTED	A10		07	S106	PUMP STOP BUTTON IN DRILLPANEL	A20		11
H08	ECL LUBRICATION WARNING LIGHT	A20		11	T02	TRANSFORMER 110VAC + 24VDC 50VA	A10		03
					T04	TRANSFORMER 115 AND 230V AC 8KVA	A10		04
					T10	CURRENT TRANSFORMER FOR K51 GROUND FAULT RELAY	A10		03
					T11	CURRENT TRANSFORMER, ELECTRIC MOTOR	A10		05
					U40	POWER SUPPLY UNIT	A10		08
					V02	DIODE UNIT FOR EMERGENCY STOP CIRCUIT	A10		09

Name ELECTRICAL SYSTEM - POWER										Transf. fr.	Drawn AVOLJ	Approver	Type M/L/E	A3
CIRCUIT DIAGRAM - A10										Confidentiality class acc.1102 K Internal	Design chd.	Drawing owner TMG	Designation	Sheet 01(11)
DCS 400-690V Y/D - START IEC										Status Released	Date 2007-05-09	Compare	9106218435_DS	

This document is our property and shall not without our permission be altered, copied, used for manufacturing or communicated to any other person or company.

AutoCAD 2010

A

B


C

D

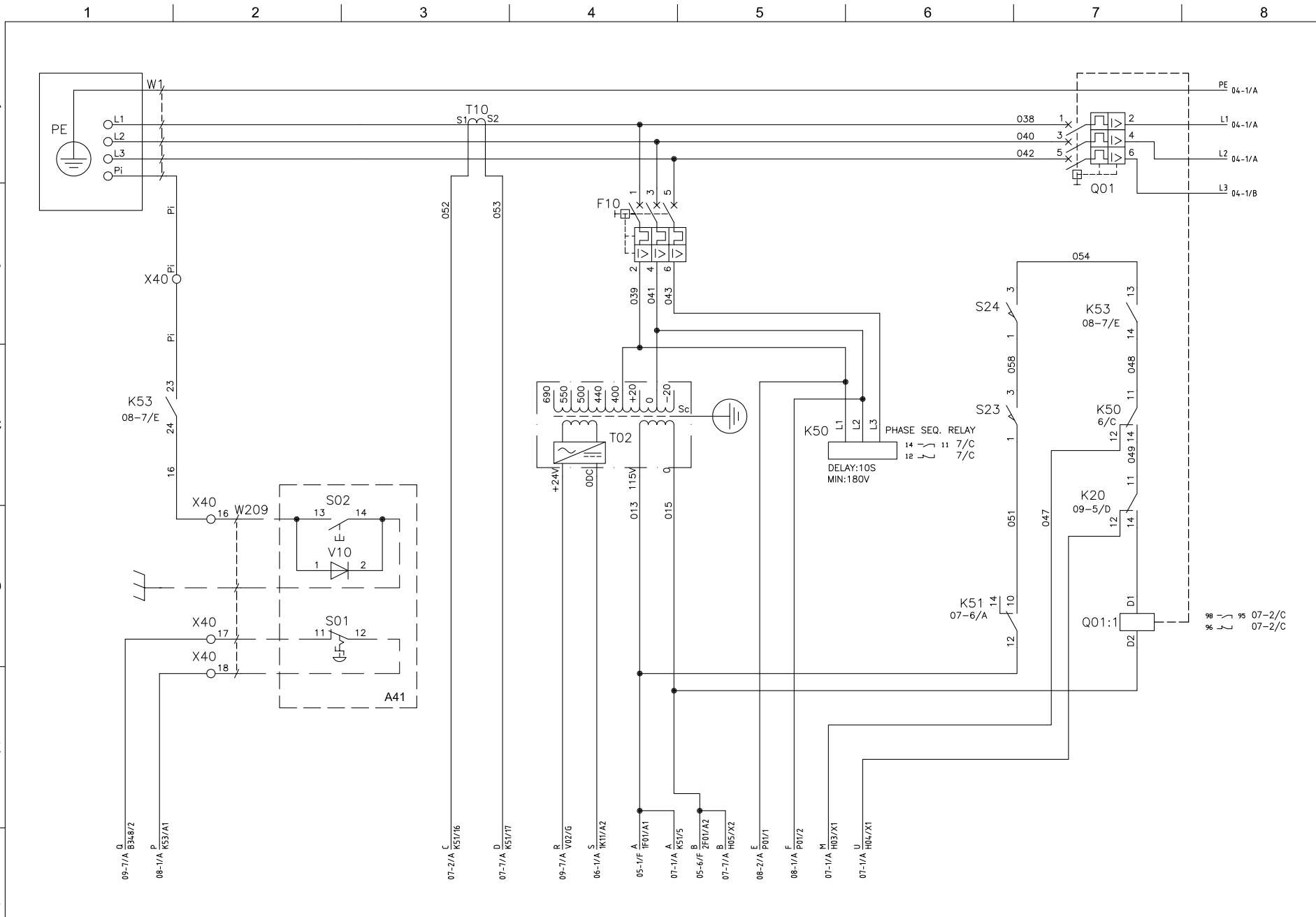
E


F

DESIGN.	DESCRIPTION	LOC	INST	SHEET
V03	DIODE UNIT WATERPUMP START CIRCUIT	A53		10
V10	DIODE,PILOTE TEST	A41		03
Z01	VARISTOR CONTACTOR K01 (EMC PROTECTION)			06
Z02	VARISTOR CONTACTOR K02 (EMC PROTECTION)			06
Z03	VARISTOR CONTACTOR K03 (EMC PROTECTION)			06
Y106	ECL OIL PUMP			10
Y114	VALVE FOR THE OPTION STOP DRILLING WHEN NO WATER FLOW			10
Y162	WATERPUMP START VALVE			08
Y171	COMPRESSOR START VALVE			07
Y172	UNLOADING VALVE HYDRAULIC PUMP (POSITIONING PUMP)			07
Y210	UNLOADING VALVE COMPRESSOR			07
Y450	ANTIPARALLELL HOLDING VALVE			10

							Name ELECTRICAL SYSTEM - POWER			Transf. fr.		Drawn AVOLJ	Approver	Type M/L/E	A3	
010	-	New ABB Contactors	TMG163136	2014-07-02	ipcssp	tmgheh	tmgheh	CIRCUIT DIAGRAM - A10		Confidentiality class acc.1102 K Internal	Design chd.	Drawing owner TMG	Designation	Sheet 02(11)		
Rev.	Pos.	Modified from		Date	Mod.by	Chd.by	Appd.by	DCS 400-690V Y/D - START IEC		Status Released	Date 2007-05-09	Compare	9106218435 DS			





								Name ELECTRICAL SYSTEM - POWER			Transf. fr.		Drawn AVOLJ		Approver		Type M/L/E		A
								CIRCUIT DIAGRAM - A10			Confidentiality class acc.1102 K Internal		Design chd.		Drawing owner TMG		Designation Sheet 03(11)		
								DCS 400-690V Y/D - START IEC			Status Released		Date 2007-05-09		Compare		9106218435 DS		
010	-	New ABB Contactors		TMG163136	2014-07-02	ipcssp	tmgheh	tmgheh											
Rev.	Pos.	Modified from			Date	Mod.by	Chd.by	Appd.by											

This document is our property and shall not without our permission be altered, copied, used for manufacturing or communicated to any other person or company.

This document is our property and shall not without our permission be altered, copied, used for manufacturing or communicated to any other person or company.

AutoCAD 2010

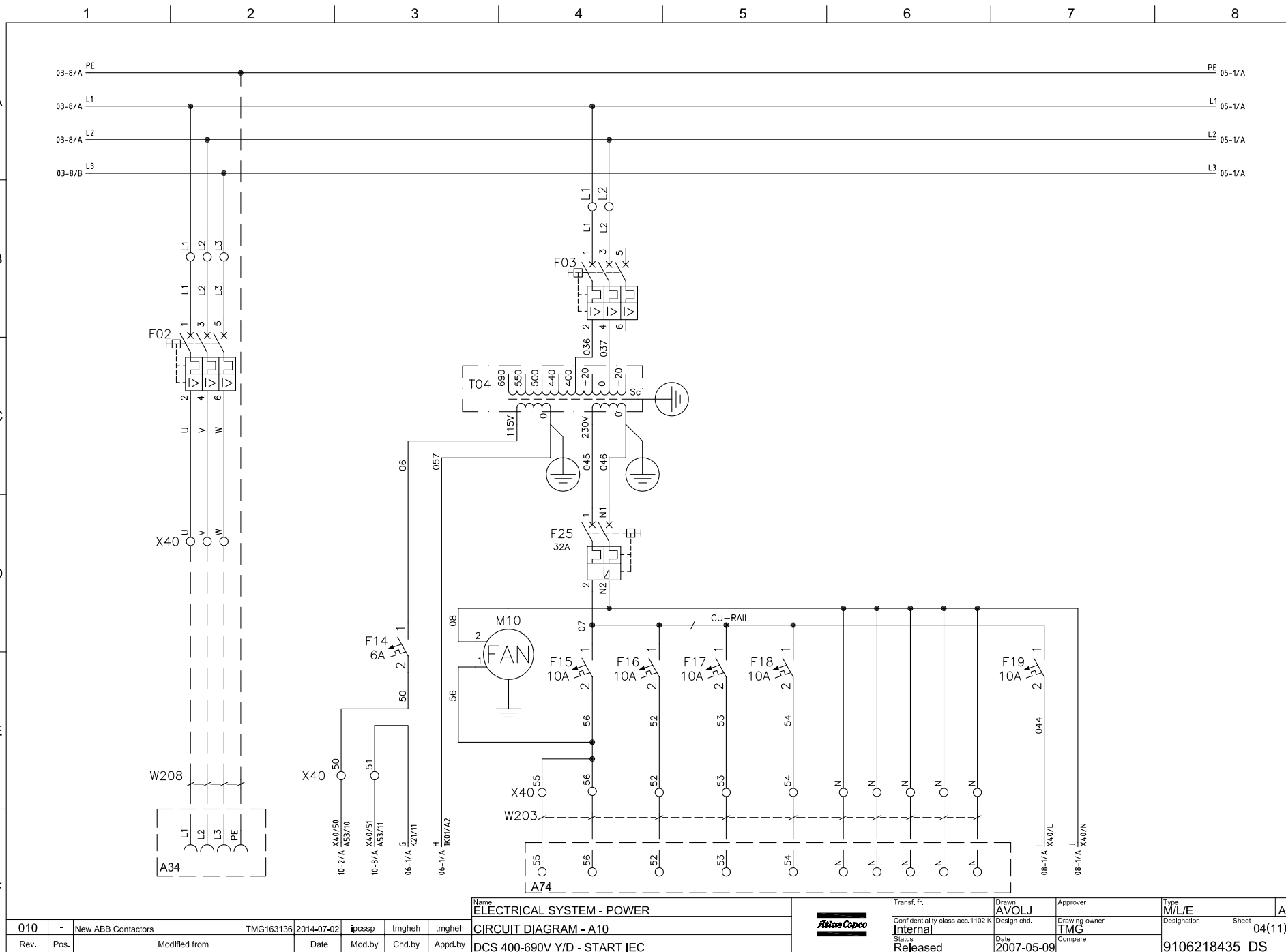
B

C

D

E

F



A

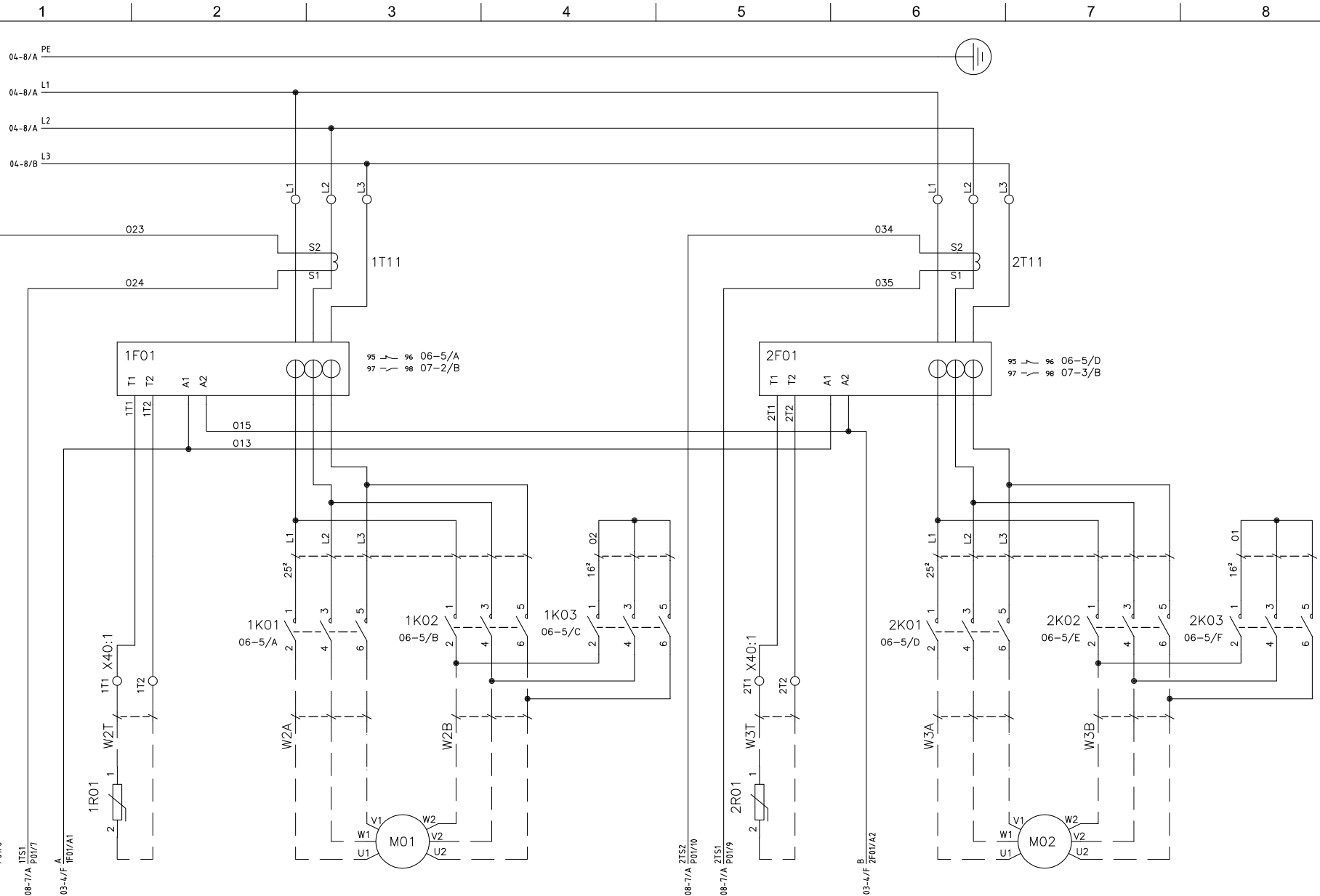
B


C

D

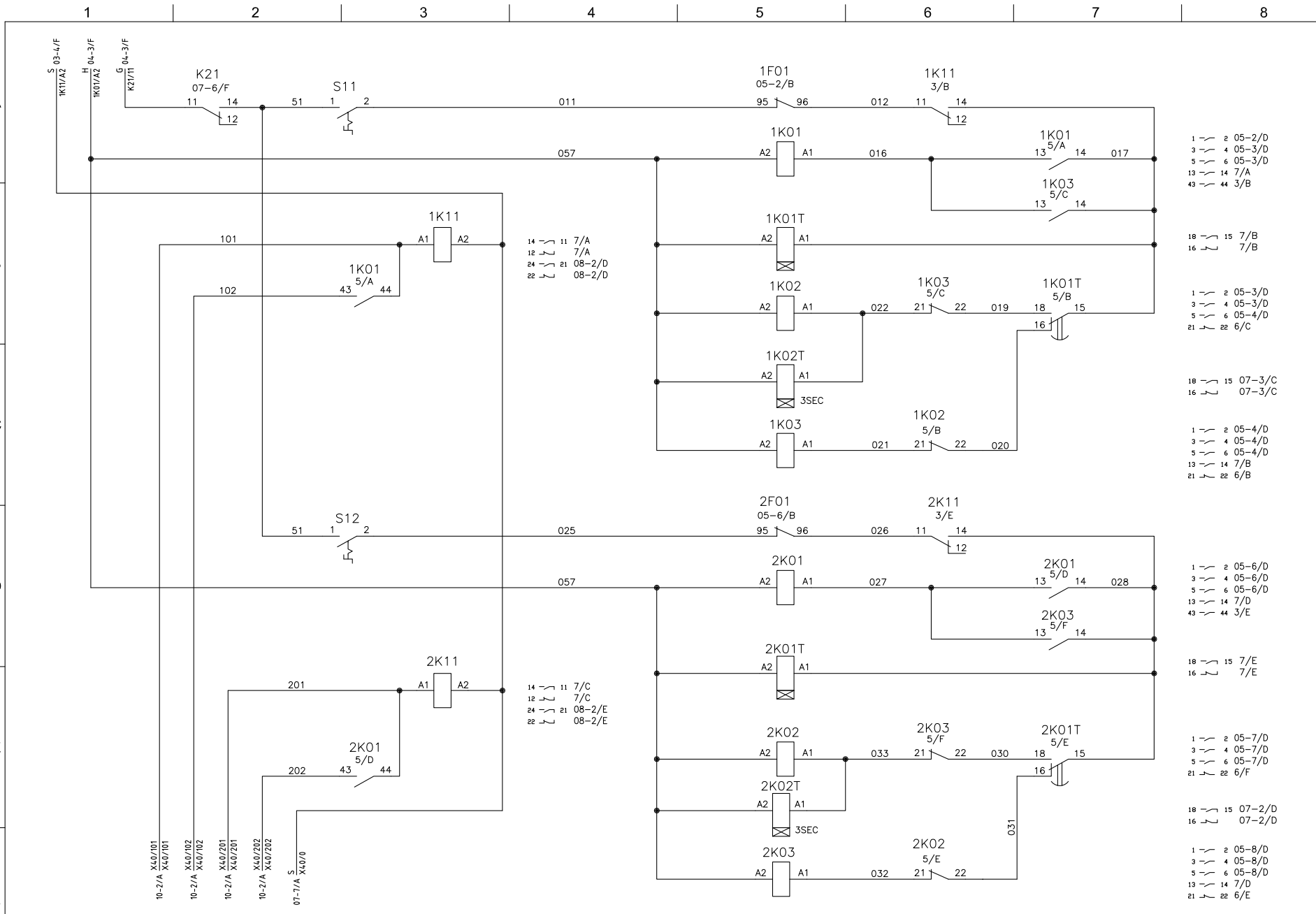
E

F




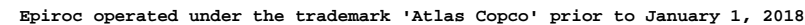
							Name	ELECTRICAL SYSTEM - POWER		Transf. fr.	Drawn	Approver	Type	M/L/E	A
							CIRCUIT DIAGRAM - A10	Confidentiality class acc.1102 K Internal		Design chd.	Drawing owner	TMG	Designation	Sheet	05(11)
								Status		Date	Compare	9106218435	DS		
								Released		2007-05-09					
010	-	New ABB Contactors	TMG163136	2014-07-02	ipcssp	tmghgh	tmghgh								
Rev.	Pos.	Modified from		Date	Mod.by	Chd.by	Appd.by	DCS 400-690V Y/D - START IEC							

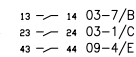
This document is our property and shall not without our permission be altered, copied, used for manufacturing or communicated to any other person or company.



- 1 - 2 05-2/D
- 3 - 4 05-3/D
- 5 - 6 05-3/D
- 13 - 14 7/A
- 43 - 44 3/B
- 18 - 15 7/B
- 16 - 7/B
- 1 - 2 05-3/D
- 3 - 4 05-3/D
- 5 - 6 05-4/D
- 21 - 22 6/C
- 18 - 15 07-3/C
- 16 - 07-3/C
- 1 - 2 05-4/D
- 3 - 4 05-4/D
- 5 - 6 05-4/D
- 13 - 14 7/B
- 21 - 22 6/B
- 1 - 2 05-6/D
- 3 - 4 05-6/D
- 5 - 6 05-6/D
- 13 - 14 7/D
- 43 - 44 3/E
- 18 - 15 7/E
- 16 - 7/E
- 1 - 2 05-7/D
- 3 - 4 05-7/D
- 5 - 6 05-7/D
- 21 - 22 6/F
- 18 - 15 07-2/D
- 16 - 07-2/D
- 1 - 2 05-8/D
- 3 - 4 05-8/D
- 5 - 6 05-8/D
- 13 - 14 7/D
- 21 - 22 6/E

								Name ELECTRICAL SYSTEM - POWER			Transf. fr.		Drawn AVOLJ		Approver		Type M/L/E		A	
010 - New ABB Contactors TMG163136 2014-07-02 ipcssp tmgheh tmgheh								CIRCUIT DIAGRAM - A10			Confidentiality class acc.1102 K Internal		Design chd.		Drawing owner TMG		Designation Sheet		06(11)	
Rev. Pos. Modified from Date Mod.by Chd.by Appd.by								DCS 400-690V Y/D - START IEC			Status Released		Date 2007-05-09		Compare		9106218435 DS			





**Atlas Copco**



A

B

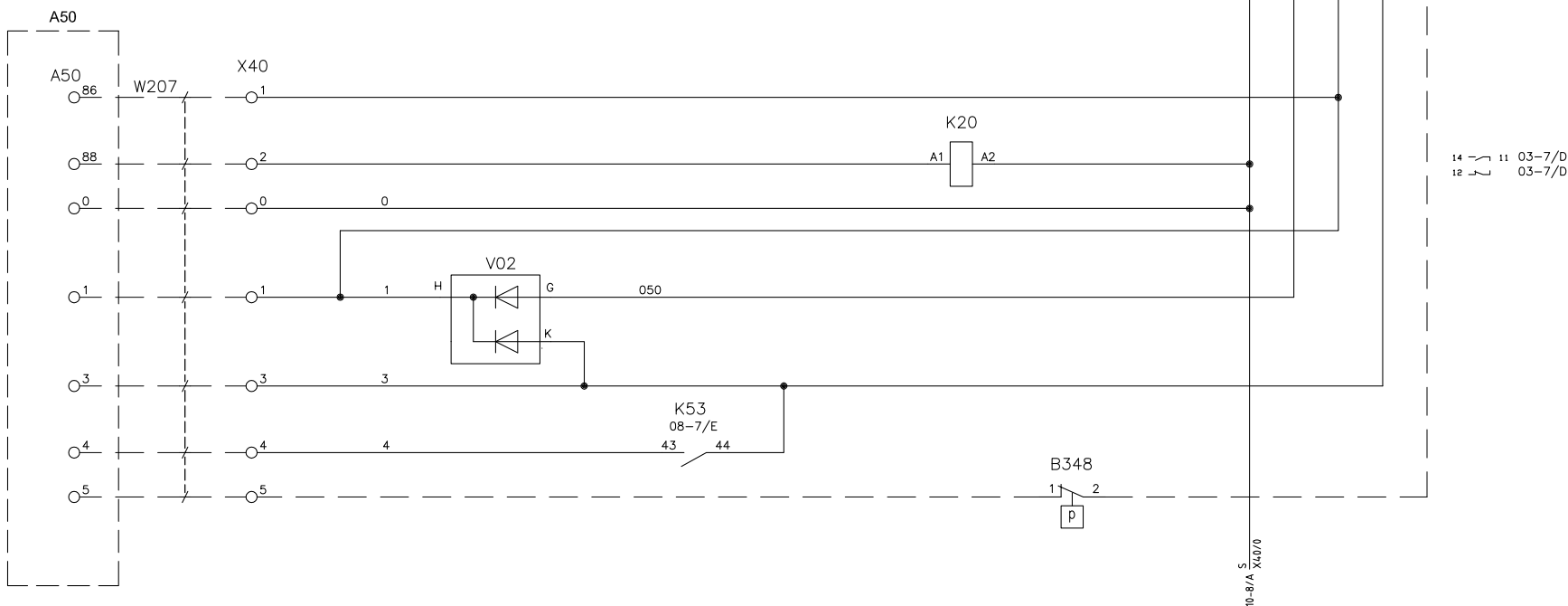
C

D

E


F

1 2 3 4 5 6 7 8

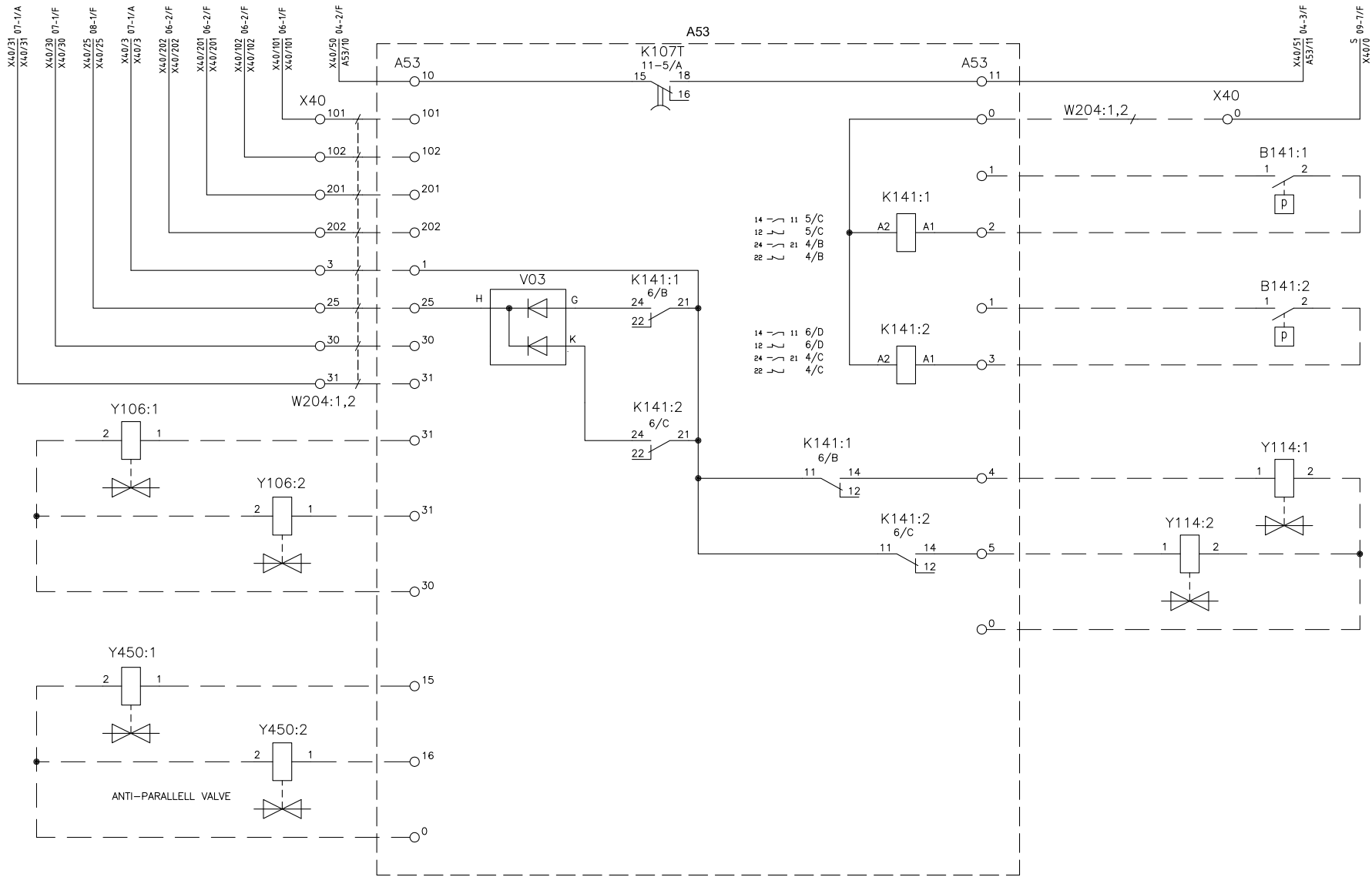


14 ~ 11 03-7/D  
12 ~ 03-7/D


This document is our property and shall not without our permission be altered, copied, used for manufacturing or communicated to any other person or company.

							Name ELECTRICAL SYSTEM - POWER			Transf. fr.	Drawn AVOLJ	Approver	Type M/L/E	A	
010	-	New ABB Contactors	TMG163136	2014-07-02	ipcssp	tmgheh	tmgheh	CIRCUIT DIAGRAM - A10		Confidentiality class acc.1102 K Internal	Design chd.	Drawing owner TMG	Designation	Sheet	09(11)
Rev.	Pos.	Modified from		Date	Mod.by	Chd.by	Appd.by	DCS 400-690V Y/D - START IEC		Status Released	Date 2007-05-09	Compare	9106218435 DS		

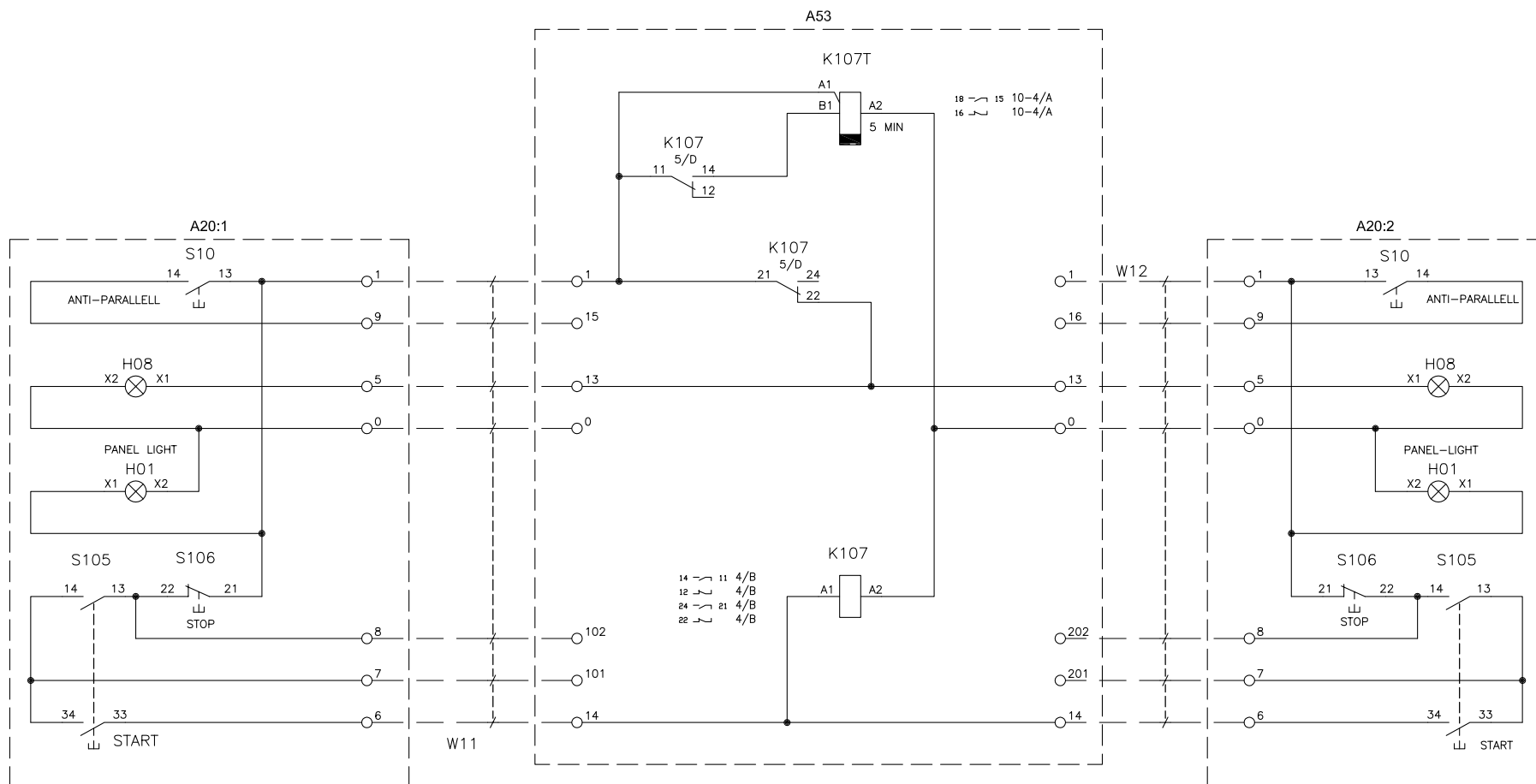
1 2 3 4 5 6 7 8



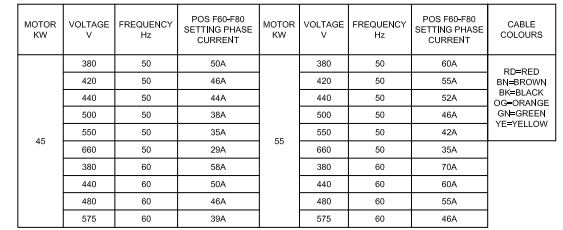
This document is our property and shall not without our permission be altered, copied, used for manufacturing or communicated to any other person or company.

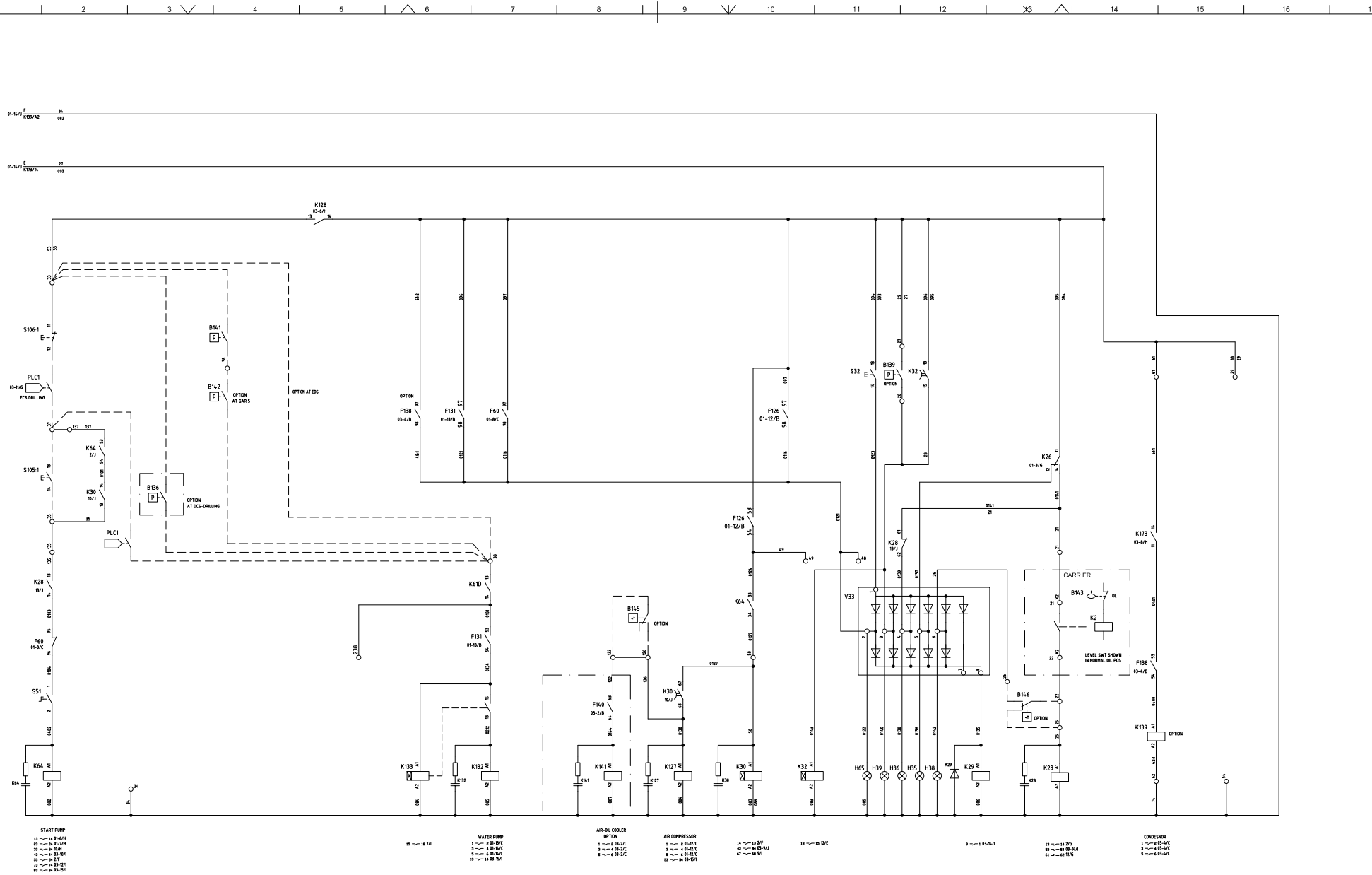
								Name ELECTRICAL SYSTEM - POWER			Transf. fr.		Drawn AVOLJ		Approver		Type M/L/E		A3				
010 - New ABB Contactors TMG163136								2014-07-02			ipcssp		tmgheh		tmgheh		CIRCUIT DIAGRAM - A10						
Rev.								Pos.			Modified from		Date		Mod.by		Chd.by			Appd.by		DCS 400-690V Y/D - START IEC	
											Confidentiality class acc.1102 K		Internal		Design chd.		Drawing owner TMG			Designation		Sheet	
											Status Released		Date 2007-05-09		Compare		10(11)						
																	9106218435 DS						

1 2 3 4 5 6 7 8



Name ELECTRICAL SYSTEM - POWER							Transf. fr.		Drawn AVOLJ	Approver	Type M/L/E	A3
010	-	New ABB Contactors	TMG163136	2014-07-02	ipcssp	tmgheh	tmgheh	Confidentiality class acc.1102 K	Design chd.	Drawing owner	Designation	Sheet
Rev.	Pos.	Modified from	Date	Mod.by	Chd.by	Appd.by	DCS 400-690V Y/D - START IEC	Internal	Status	TMG	11(11)	
								Released	Date 2007-05-09	Compare	9106218435_DS	

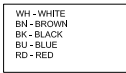




TOTAL ALARMS  
H35 - WRONG PHASE SEQUENCE  
H36 - LOW OIL LEVEL  
H65 - MOTOR OVERLOAD  
H38 - HIGH OIL TEMP  
H39 - PERCUSSION RETURN FILTER

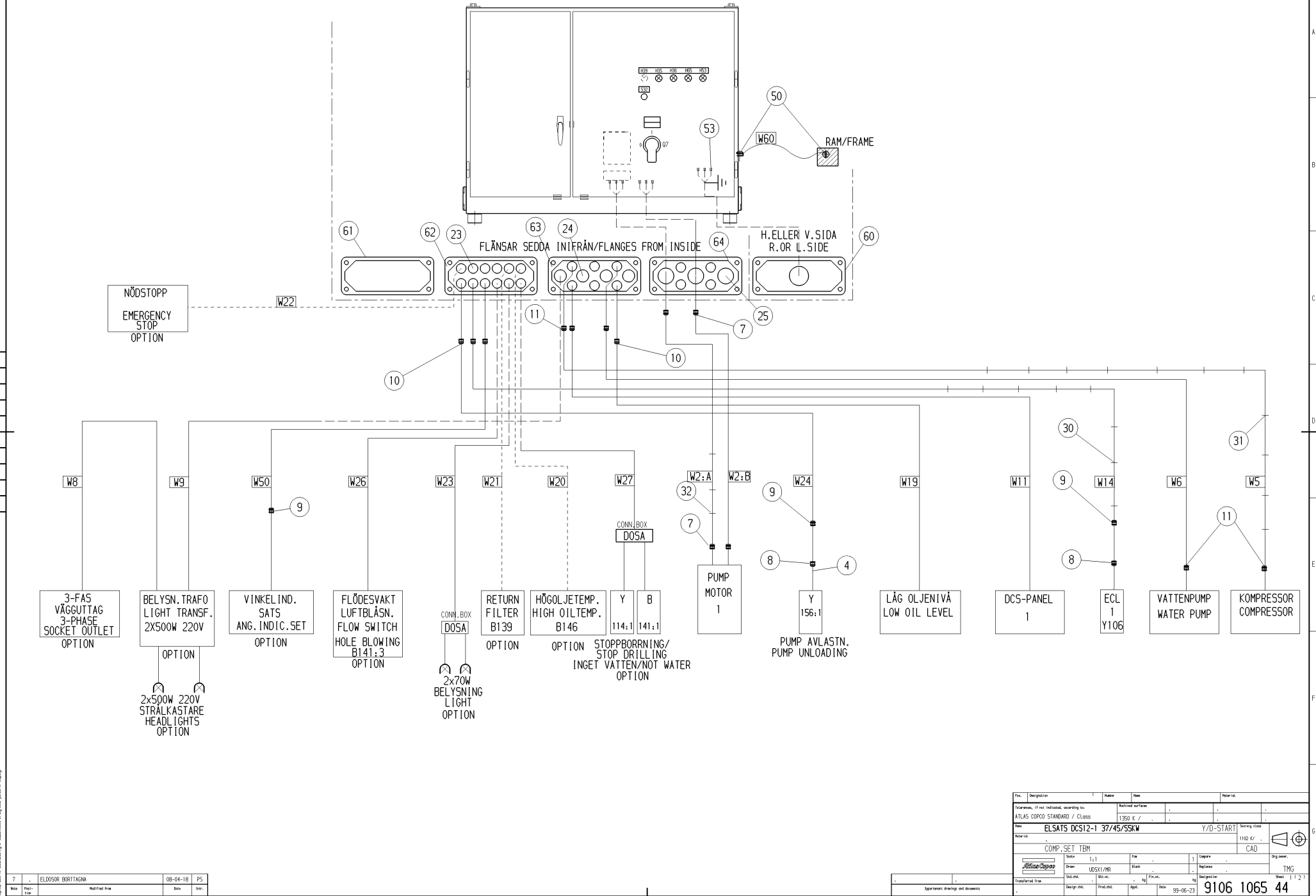
Rev.	Phs.	Modif/Rev	Date	Monity	Chk/ly	Agnt/ly
007		AUTOCAD ELECTRICAL CONVERSION	TMD/19882	2014-03-10	Wymw	trg

Rev.	Phs.	Modif/Rev	Date	Monity	Chk/ly	Agnt/ly
007		AUTOCAD ELECTRICAL CONVERSION	TMD/19882	2014-03-10	Wymw	trg



Type <b>ELECTRICAL SYSTEM</b> Circuit Diagram 380-690V 50/60Hz Y/D START		Trans./V. 380-690V 50/60Hz Y/D START Internal Date Released	Drawn UTU211 Checked Internal Date 2004-04-21	Approved TMTG Company TMTG	Issue ECS DCS EDS Description 9106128762 DS	A 03(03)
---	---	---	--	-------------------------------------	--	-------------

This document is for reference only and shall not be used for any other purpose than intended. Reproduction or distribution of this document is prohibited without prior written permission from the copyright owner.



7	ELDÖSOR BORTTÄGNA	08-04-18	PS
Rev.	Proj.	Modif.	Rev.

Rev.	Designation	Number	Name	Material
1	ELDÖSOR BORTTÄGNA	08-04-18	PS	
2	ELDÖSOR BORTTÄGNA	08-04-18	PS	
3	ELDÖSOR BORTTÄGNA	08-04-18	PS	
4	ELDÖSOR BORTTÄGNA	08-04-18	PS	
5	ELDÖSOR BORTTÄGNA	08-04-18	PS	
6	ELDÖSOR BORTTÄGNA	08-04-18	PS	
7	ELDÖSOR BORTTÄGNA	08-04-18	PS	
8	ELDÖSOR BORTTÄGNA	08-04-18	PS	
9	ELDÖSOR BORTTÄGNA	08-04-18	PS	
10	ELDÖSOR BORTTÄGNA	08-04-18	PS	
11	ELDÖSOR BORTTÄGNA	08-04-18	PS	
12	ELDÖSOR BORTTÄGNA	08-04-18	PS	
13	ELDÖSOR BORTTÄGNA	08-04-18	PS	
14	ELDÖSOR BORTTÄGNA	08-04-18	PS	
15	ELDÖSOR BORTTÄGNA	08-04-18	PS	
16	ELDÖSOR BORTTÄGNA	08-04-18	PS	
17	ELDÖSOR BORTTÄGNA	08-04-18	PS	
18	ELDÖSOR BORTTÄGNA	08-04-18	PS	
19	ELDÖSOR BORTTÄGNA	08-04-18	PS	
20	ELDÖSOR BORTTÄGNA	08-04-18	PS	
21	ELDÖSOR BORTTÄGNA	08-04-18	PS	
22	ELDÖSOR BORTTÄGNA	08-04-18	PS	
23	ELDÖSOR BORTTÄGNA	08-04-18	PS	
24	ELDÖSOR BORTTÄGNA	08-04-18	PS	
25	ELDÖSOR BORTTÄGNA	08-04-18	PS	
26	ELDÖSOR BORTTÄGNA	08-04-18	PS	
27	ELDÖSOR BORTTÄGNA	08-04-18	PS	
28	ELDÖSOR BORTTÄGNA	08-04-18	PS	
29	ELDÖSOR BORTTÄGNA	08-04-18	PS	
30	ELDÖSOR BORTTÄGNA	08-04-18	PS	
31	ELDÖSOR BORTTÄGNA	08-04-18	PS	
32	ELDÖSOR BORTTÄGNA	08-04-18	PS	
33	ELDÖSOR BORTTÄGNA	08-04-18	PS	
34	ELDÖSOR BORTTÄGNA	08-04-18	PS	
35	ELDÖSOR BORTTÄGNA	08-04-18	PS	
36	ELDÖSOR BORTTÄGNA	08-04-18	PS	
37	ELDÖSOR BORTTÄGNA	08-04-18	PS	
38	ELDÖSOR BORTTÄGNA	08-04-18	PS	
39	ELDÖSOR BORTTÄGNA	08-04-18	PS	
40	ELDÖSOR BORTTÄGNA	08-04-18	PS	
41	ELDÖSOR BORTTÄGNA	08-04-18	PS	
42	ELDÖSOR BORTTÄGNA	08-04-18	PS	
43	ELDÖSOR BORTTÄGNA	08-04-18	PS	
44	ELDÖSOR BORTTÄGNA	08-04-18	PS	
45	ELDÖSOR BORTTÄGNA	08-04-18	PS	
46	ELDÖSOR BORTTÄGNA	08-04-18	PS	
47	ELDÖSOR BORTTÄGNA	08-04-18	PS	
48	ELDÖSOR BORTTÄGNA	08-04-18	PS	
49	ELDÖSOR BORTTÄGNA	08-04-18	PS	
50	ELDÖSOR BORTTÄGNA	08-04-18	PS	
51	ELDÖSOR BORTTÄGNA	08-04-18	PS	
52	ELDÖSOR BORTTÄGNA	08-04-18	PS	
53	ELDÖSOR BORTTÄGNA	08-04-18	PS	
54	ELDÖSOR BORTTÄGNA	08-04-18	PS	
55	ELDÖSOR BORTTÄGNA	08-04-18	PS	
56	ELDÖSOR BORTTÄGNA	08-04-18	PS	
57	ELDÖSOR BORTTÄGNA	08-04-18	PS	
58	ELDÖSOR BORTTÄGNA	08-04-18	PS	
59	ELDÖSOR BORTTÄGNA	08-04-18	PS	
60	ELDÖSOR BORTTÄGNA	08-04-18	PS	
61	ELDÖSOR BORTTÄGNA	08-04-18	PS	
62	ELDÖSOR BORTTÄGNA	08-04-18	PS	
63	ELDÖSOR BORTTÄGNA	08-04-18	PS	
64	ELDÖSOR BORTTÄGNA	08-04-18	PS	
65	ELDÖSOR BORTTÄGNA	08-04-18	PS	
66	ELDÖSOR BORTTÄGNA	08-04-18	PS	
67	ELDÖSOR BORTTÄGNA	08-04-18	PS	
68	ELDÖSOR BORTTÄGNA	08-04-18	PS	
69	ELDÖSOR BORTTÄGNA	08-04-18	PS	
70	ELDÖSOR BORTTÄGNA	08-04-18	PS	
71	ELDÖSOR BORTTÄGNA	08-04-18	PS	
72	ELDÖSOR BORTTÄGNA	08-04-18	PS	
73	ELDÖSOR BORTTÄGNA	08-04-18	PS	
74	ELDÖSOR BORTTÄGNA	08-04-18	PS	
75	ELDÖSOR BORTTÄGNA	08-04-18	PS	
76	ELDÖSOR BORTTÄGNA	08-04-18	PS	
77	ELDÖSOR BORTTÄGNA	08-04-18	PS	
78	ELDÖSOR BORTTÄGNA	08-04-18	PS	
79	ELDÖSOR BORTTÄGNA	08-04-18	PS	
80	ELDÖSOR BORTTÄGNA	08-04-18	PS	
81	ELDÖSOR BORTTÄGNA	08-04-18	PS	
82	ELDÖSOR BORTTÄGNA	08-04-18	PS	
83	ELDÖSOR BORTTÄGNA	08-04-18	PS	
84	ELDÖSOR BORTTÄGNA	08-04-18	PS	
85	ELDÖSOR BORTTÄGNA	08-04-18	PS	
86	ELDÖSOR BORTTÄGNA	08-04-18	PS	
87	ELDÖSOR BORTTÄGNA	08-04-18	PS	
88	ELDÖSOR BORTTÄGNA	08-04-18	PS	
89	ELDÖSOR BORTTÄGNA	08-04-18	PS	
90	ELDÖSOR BORTTÄGNA	08-04-18	PS	
91	ELDÖSOR BORTTÄGNA	08-04-18	PS	
92	ELDÖSOR BORTTÄGNA	08-04-18	PS	
93	ELDÖSOR BORTTÄGNA	08-04-18	PS	
94	ELDÖSOR BORTTÄGNA	08-04-18	PS	
95	ELDÖSOR BORTTÄGNA	08-04-18	PS	
96	ELDÖSOR BORTTÄGNA	08-04-18	PS	
97	ELDÖSOR BORTTÄGNA	08-04-18	PS	
98	ELDÖSOR BORTTÄGNA	08-04-18	PS	
99	ELDÖSOR BORTTÄGNA	08-04-18	PS	
100	ELDÖSOR BORTTÄGNA	08-04-18	PS	

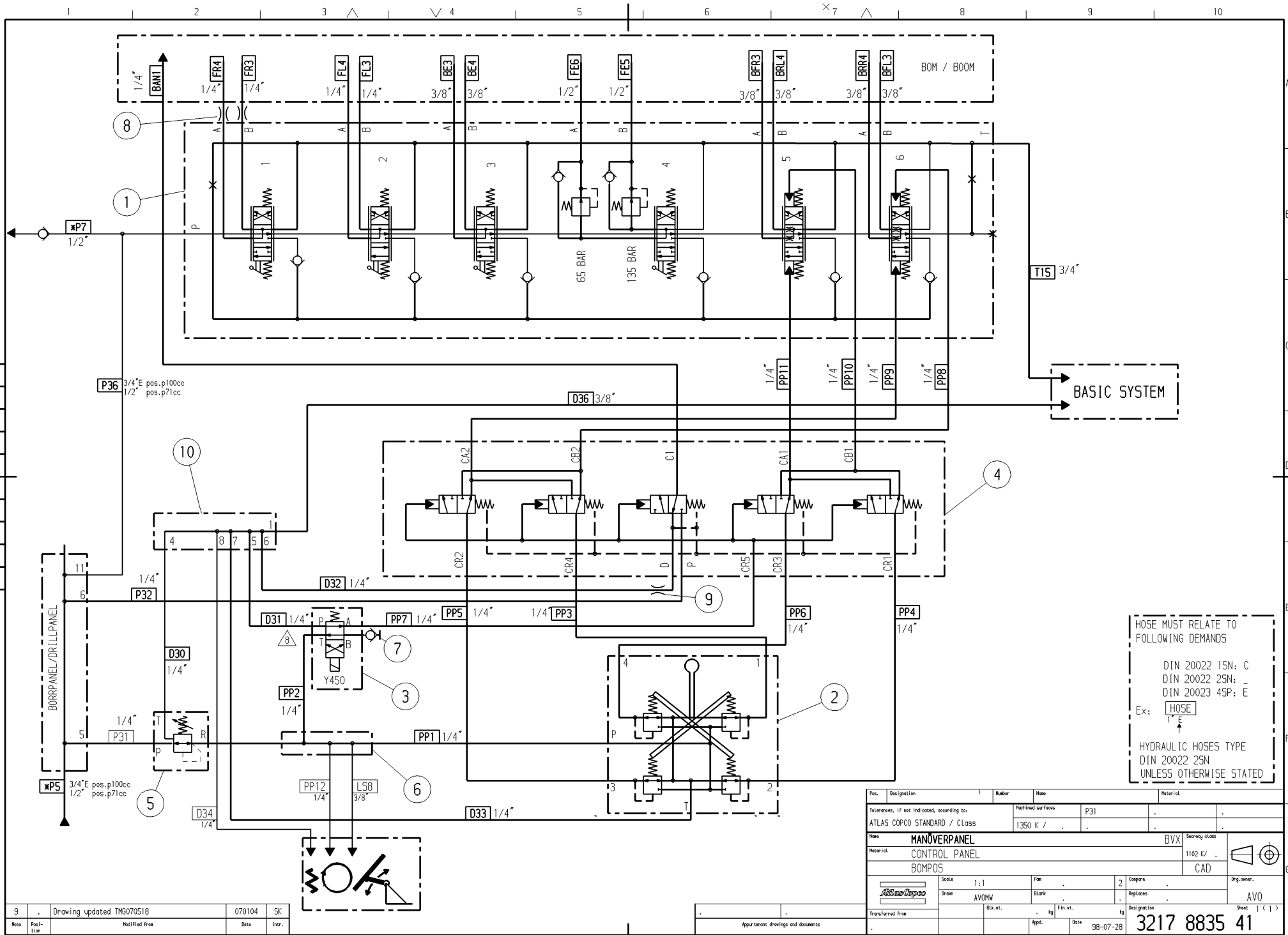




## Hydraulic Diagram

### LIST OF CONTENTS

Part no	Description	Remarks	Page
3217883541	HYDR. SCHEDULE	CONTROL PANEL BOOMPOS.	26
9106155225	DRILL PANEL	DCS18-1 DRILL PANEL	27 - 28
3217883523	CONTROL PANEL	DRILLING PANEL STD	29 - 30
9106155133	HYDR. SYSTEM		31
9110909602	FILLER SET	HAND PUMP	32
3128310248	HYDR. SCHEDULE	BUT 35 / TURNING DEVICE	33
9106151030	HYDR. SCHEDULE	WATER REEL	34
3217391452	HYDR. SCHEDULE	WATER REEL SWING	35
9106150983	HYDR. SCHEDULE	CABLE REEL	36







A

B

C

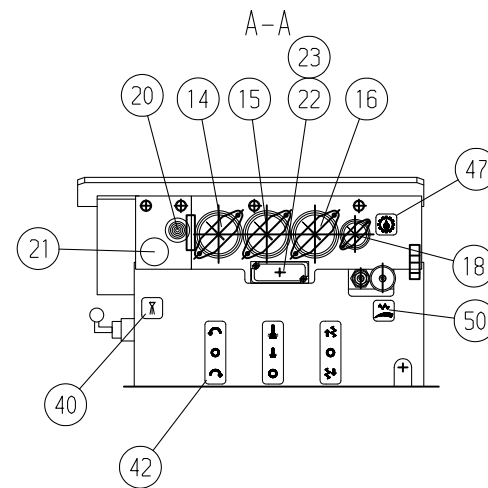
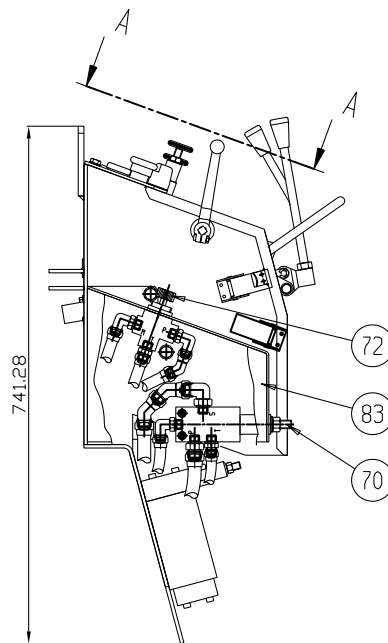
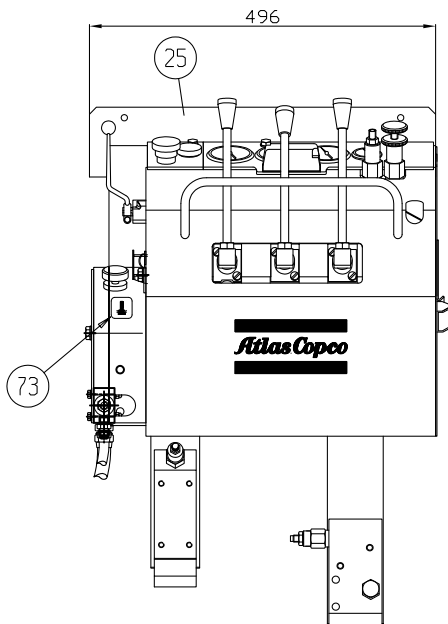
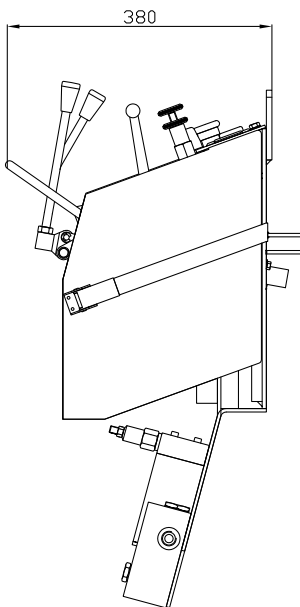
D

E

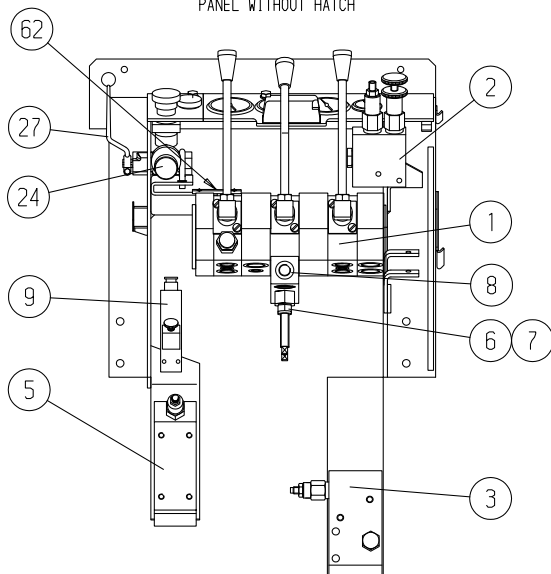
F

G

H



PANEL UTAN LUCKA  
PANEL WITHOUT HATCH

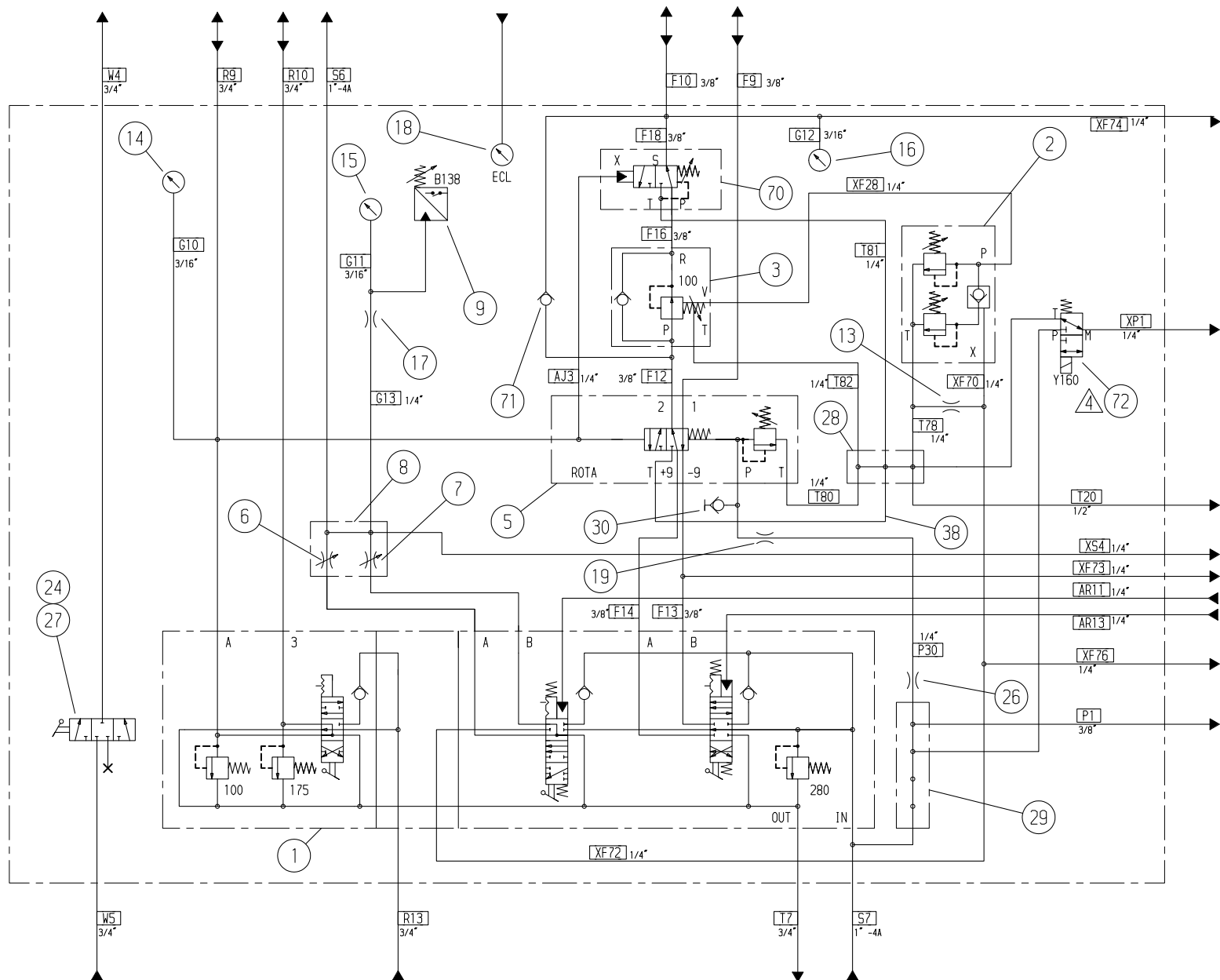


This document is our property and shall not be reproduced or  
communicated to any other person or company.

004	change hand-direc to solenoid valve	TMG1712014	2018-01-12	cmnle	cmnlg	cmnlg
Rev.	Pos.	Modified from	Date	Mod.by	Chd.by	Appd.by

MANOVERPANEL	BORRNING	Epiroc	Transf. to	Design	AVOSNK	Approved	UTUP/	MANOVERPANEL	A2
CONTROL PANEL			Confidentiality class acc.102 K	Design chd.	TMS	Design owner			
DCS18-280			Released	Date	1999-02-17	Complete		3217883523 DS	1 (2)

1 2 3 4 5 6 7 8 9 10 11 12



This document is our property and shall not be reproduced or transmitted in any form or by any means electronic or mechanical, including photocopying, recording, or by any information storage or retrieval system, without prior written permission from Epiroc.

Rev.	Pos.	Modified from	Date	Mod.by	Chd.by	Appd.by
004		change hand-dirc to solenoid valve	TMG1712014	cmale	cmng	cmjw
		Modified from	Date	Mod.by	Chd.by	Appd.by

MANOVERPANEL	BORRNING	Epiroc	Transf. R.	Design	AVOSNIK	Approved	MANOVERPANEL	A2
CONTROL PANEL			Confidentiality class acc. 1102 R	Design chd.	UTUP/	Drawing owner	Designation	Sheet 2 (2)
DCS 18-280			Released	Date	1999-02-17	Complete	3217883523 DS	



Note	Modified from	Date	Intr.	Note	Modified from	Date	Intr.
1	SLANGMÄRKNING TF, TF1, TILLFÖRD.	920124	RW	0	.	.	.

Pos.	Designation	Number	Name	Material
Tolerances, if not indicated, according to:		Machined surfaces	.	.
ATLAS COPCO STANDARD / Class		1350 K /	.	.

Name	<b>PÅFYLNINGSSATS</b>			Secrecy class
Material	FILLER SET			1102 K / .
	HAND PUMP			CAD
	Scale	Fin	4	Compare
	Drawn XTTPR	Blank	.	Replaces
Transferred from	Std.chd.	Blk.wt.	kg	Fin.wt.
	Design chd.	Prod.chd.	Appd.	Date

Sheet 1 ( 2 )

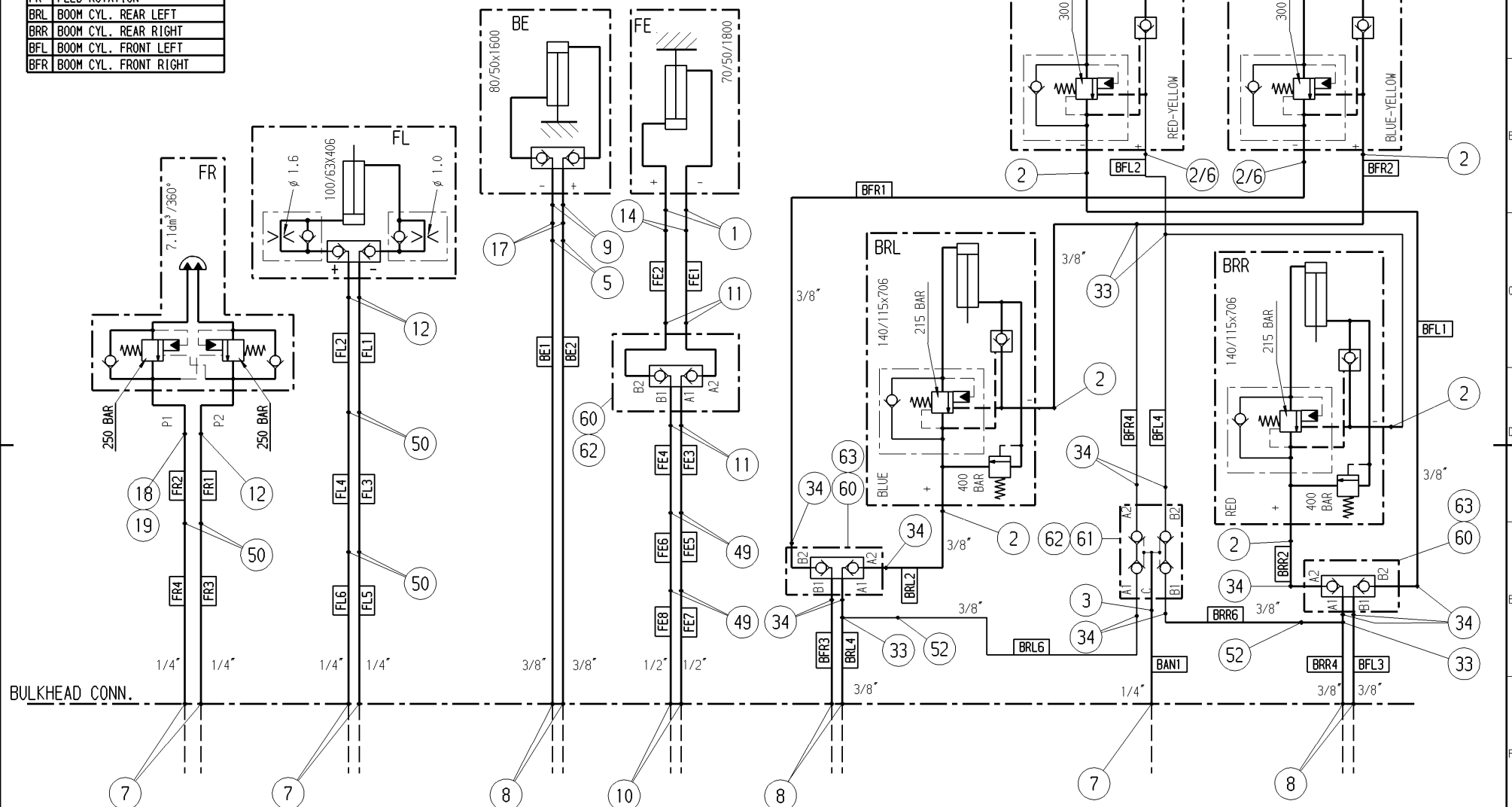
9110 9096 02

88-05-24

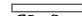
This document is our property and shall not without our permission be altered, copied, used for manufacturing or communicated to any other person or company.

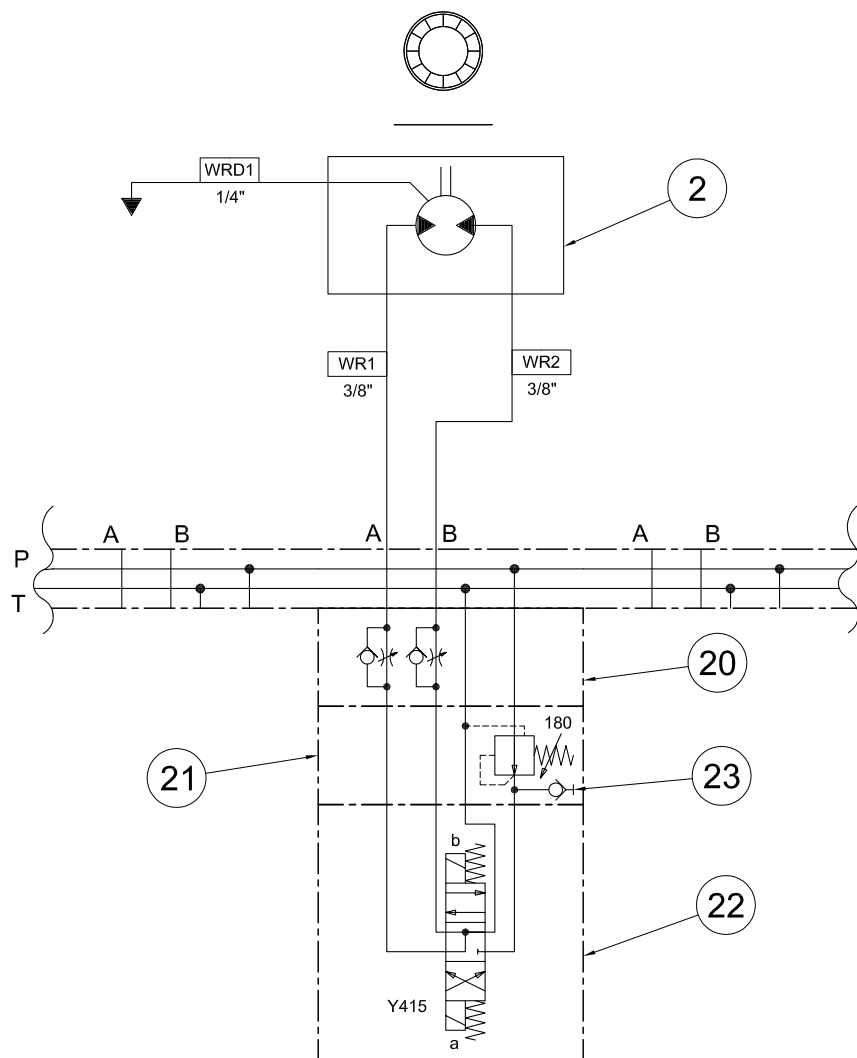


FE	FEED EXT
BE	BOOM EXT
FL	LOOK-OUT
FR	FEED ROTATION
BRL	BOOM CYL. REAR LEFT
BRR	BOOM CYL. REAR RIGHT
BFL	BOOM CYL. FRONT LEFT
BFR	BOOM CYL. FRONT RIGHT



2	2D	POS 4 removed, 18, 19 added	TMG064250	060518	UTUFU
1	.	Text justerad.	TMG 012152	1-05-31	KL
Note	Position	Modified from		Date	Intr.

Pos. Designation		Number		Name		Material	
Tolerances, if not indicated, according to:		Machined surfaces		.		.	
ATLAS COPCO STANDARD / Class		150 K /		.		.	
Name		HYDRAULIC SCHEMATA		BUT 35 G		Securing class	
Material		HYDR. SCHEDULE BOOM		1102 K /		CAD	
		Scale 1:1		Fm		2	
Brown		UTUK/N0		Blank		Copies	
Std. chd.		Blk. wt.		kg		Fin. wt.	
Transferred from		Design chd.		Prod. chd.		Appd.	
		UTUK/N0		Bote		00-10-05	
						3128 3102 48	
						TMG	
						Sheet ( 1 )	



Hoses must comply with the following specifications

EN 853 1SN : C

EN 853 2SN : \_

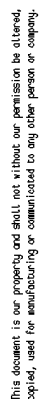
EN 856 4SP : E

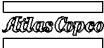
Other : X

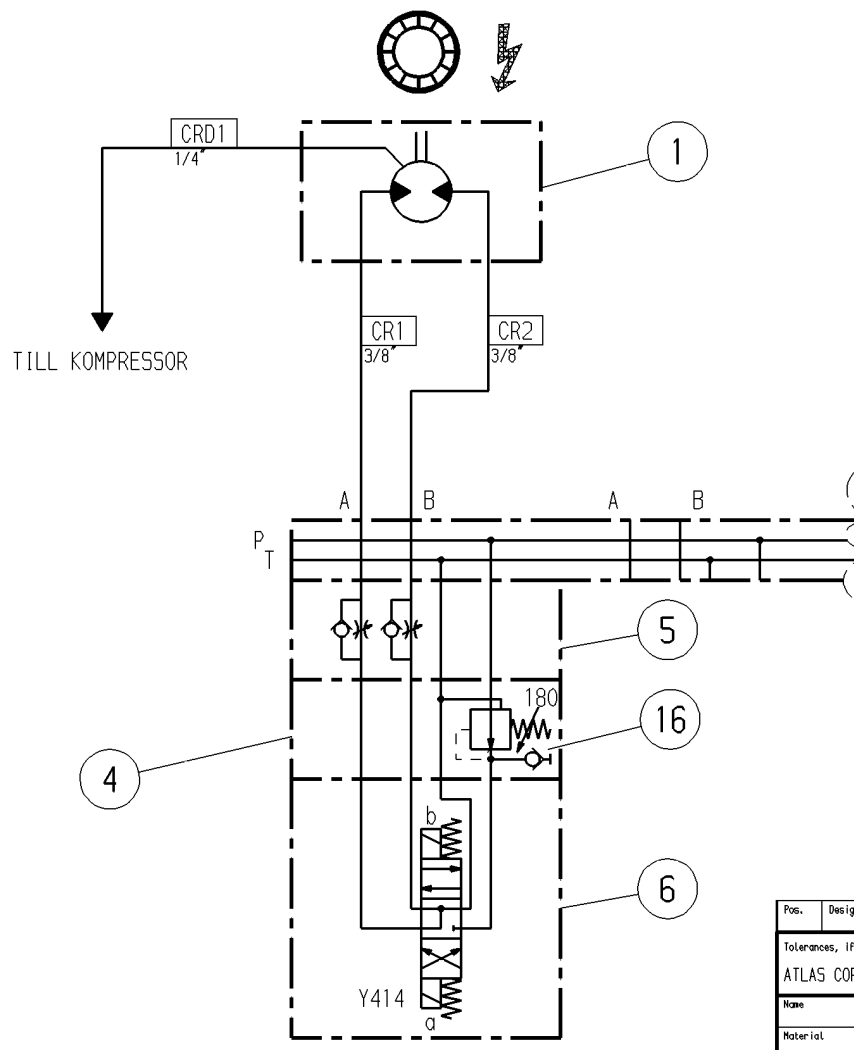
Ex. hose mark: HOSE

1" E

Name HYDRAULIC DIAGRAM							Transf. fr.	Drawn UTUMP/P ROTH	Approver TMG	Type HYDRAULIC SCHED A3
001	Pos. 21 & 23 Interchanged.	2016-06-22	lpcpra	lmgron	lmgron	WATER REEL	Confidentiality class acc.1102 K Internal	Design chd.	Drawing owner	Designation Sheet ( 1 )
Rev.	Pos.	Modified from	Date	Mod.by	Chd.by	Appd.by	Status Released	Date 2010-02-19	Compare	9106151030_DS



Pos.	Designation	Number	Name		Material	
Tolerances, if not indicated, according to:			Machined surfaces		.	.
ATLAS COPCO STANDARD / Class			1350 K /		.	.
Name						Secrecy class
HYDRAULIC SCHEDULE						
Material						1102 K /
WATER REEL SWING						
						CAD
		Scale 1:1		Fam .		3
Drawn		TMGBFK		Blank .		RepLaces .
Transferred from		Std. chd.	Blk. wt.	kg	Fin. wt.	kg
Design chd.		Prod. chd.	Appd.	Date	Designation	
				111121	3217 3914 52	
Orig. owner.						TMG
						Sheet 1 of 1



Pos.	Designation	Number	Name	Material
Tolerances, if not indicated, according to:		Machined surfaces		
ATLAS COPCO STANDARD / Class		1350 K /	.	.
Name				Secrecy class
HYDRAULSCHEMA / HYDR. SCHEDULE				.
Material				1102 K /
KABELVINDA / CABLE REEL				CAD
Scale		1:1	Fam	3
Drawn		AV05NK	Blank	.
Transferred from		Blk.wt.	kg	Fin.wt.
Appd.		Date	99-08-02	Designation
Note		Sheet 1 (1)		
Position		9106 1509 83		

This document is our property and shall not without our permission be altered, copied, used for manufacturing or communicated to any other person or company.

**Lubrication Diagram**  
**LIST OF CONTENTS**

<b>Part no</b>	<b>Description</b>	<b>Remarks</b>	<b>Page</b>
3128253852	LUBRICATION SET	BOOM LUBRICATION	38

Hose Lengths of Lubrication  
block SSV 12 (in mm)

Port	Hose Length
1,2	170
3	1700
4,6	650
7	1000
8	1150
9,10	900
11,12	1650

BAKRE LÄNKLAGER  
REAR LINK BEARINGS

TELESKOPLAGRING  
EXTENSION BEARINGS

Hose lengths of Lubrication  
block SSV 6 (in mm)

Port	Hose Length
1	150
2	350
3	900 (+750 for Long boom)
4	1160 (+750 for Long boom)
A	850 (+750 for Long boom)

009	-	Notes added. Refer CNL	2017-01-31	ipcbear	Imgnos	Imgnos
Rev.	Pos.	Modified from	Date	Mod.by	Chd.by	Appd.by

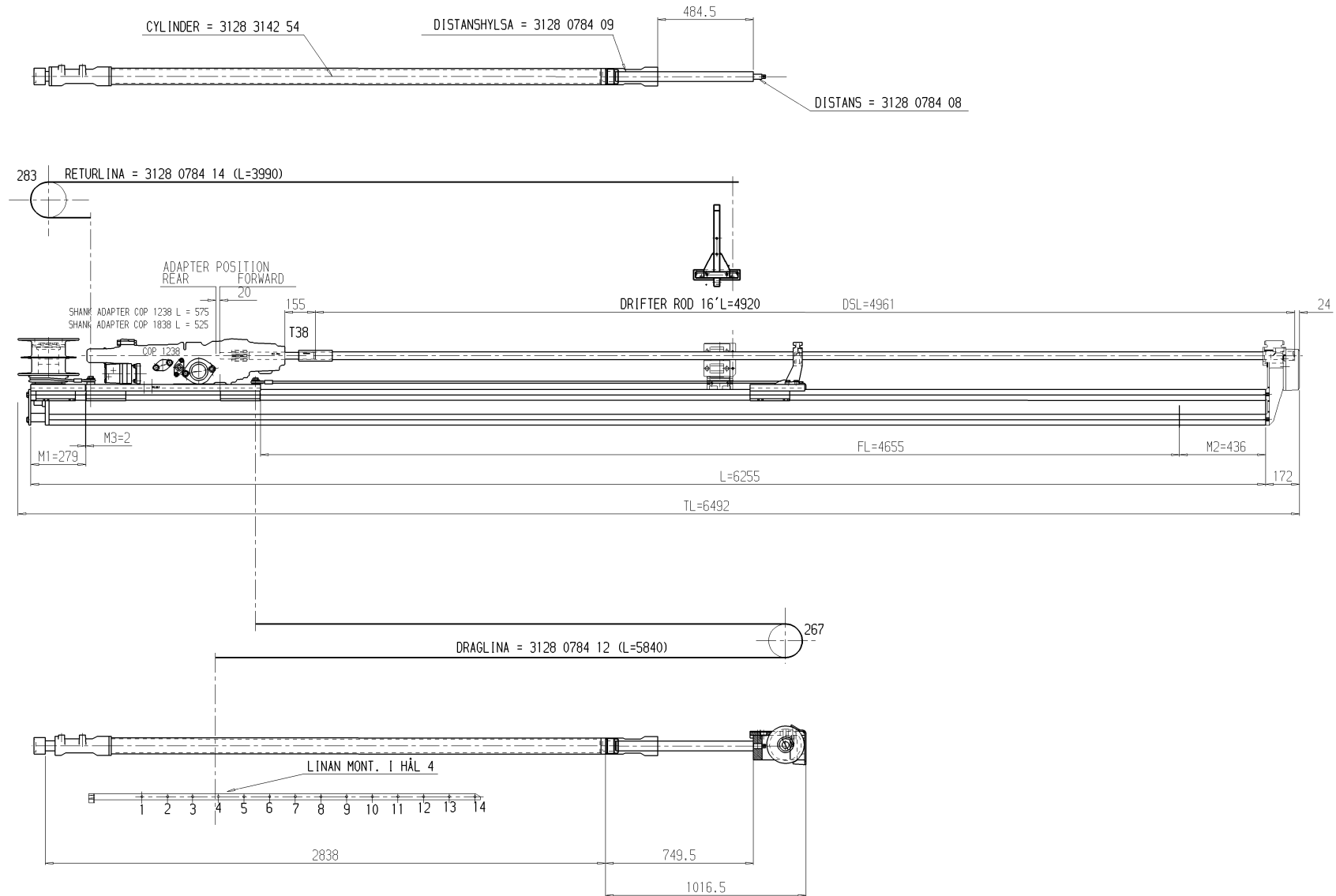
Lubrication system		Transf. IC	Drawn	XTATBB	Approver	IC
		Conformity class acc. 102 K	Design chd.	TMS	Designing owner	BUT 35E/F
		Released	Date	1992-07-02	Company	3128253852 DS

## Mechanical - Overview

### LIST OF CONTENTS

Part no	Description	Remarks	Page
3128313435	ASSEMBLY DWG	BMH 6X16	40
3128312015	STROP INSTR.	STROP INSTR.	41
9106155106	CIRCUIT DIAGRAM		42

# MONTERING- OCH MÅTTSKISS BMH 6X16, BMH 6X16 SKOTT, BMH 6X16 WM



2	F3	Linan monteras i hål 4 var 5	060522	BES
1		BMH 6X16 SKOTT OCH BMH 6X16 WM TILLKOMMER	041130	
Rev.	Part-	Size	Inter.	

Rev.	Designation	Number	Name	Material
Dimensions, if not indicated, according to: ATLAS COPCO STANDARD / CLASS				
Name: <b>BMH 6X16</b>				
Material: <b>MONTERINGS- OCH MÅTTSKISS</b>				
Scale	1:10	File	Supers	Org. user
Drawn	UTS/BES	Exec	Explosion	TMG
Std. int.	Std. int.	Appl.	Specs	Sheet 1 / 1
Design chg.	Prod. chg.	Appl.	Specs	02-10-02
3128 3134 35				3128 3134 35







